

DIXIE ENDEAVOR

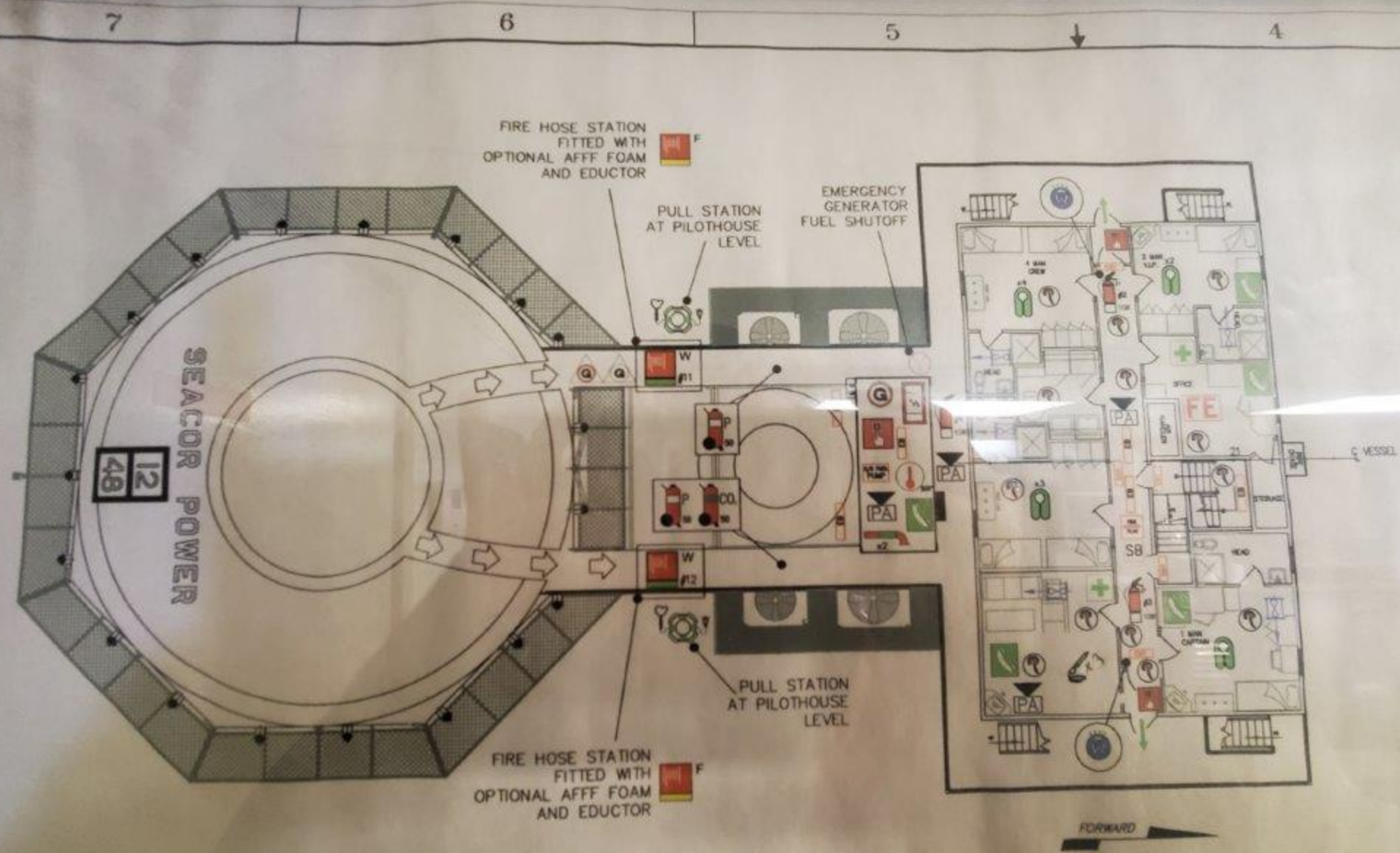
HULL 1009

BUILT BY SEMCO, L.L.C.

LAFITTE, LA.

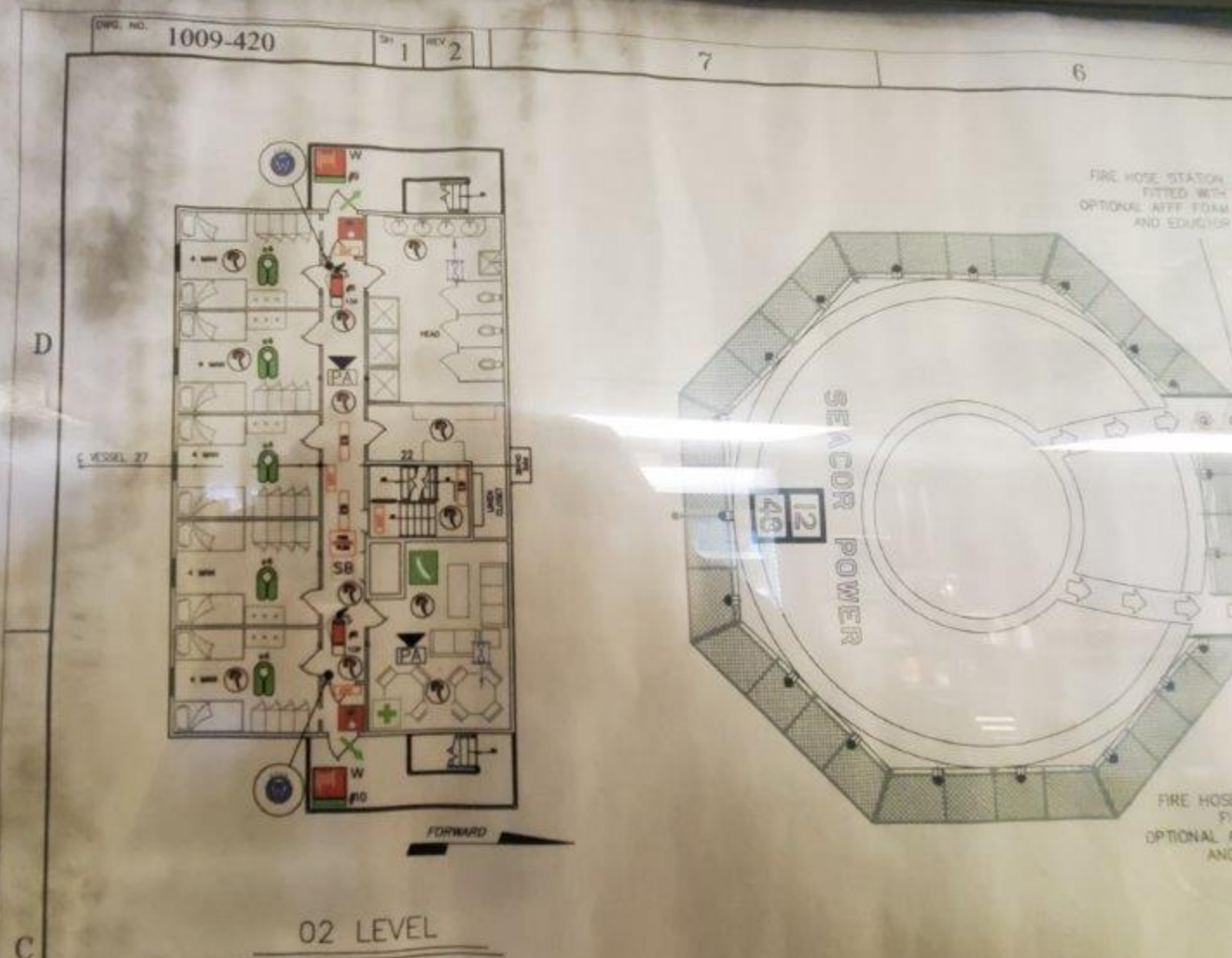
APRIL, 2002

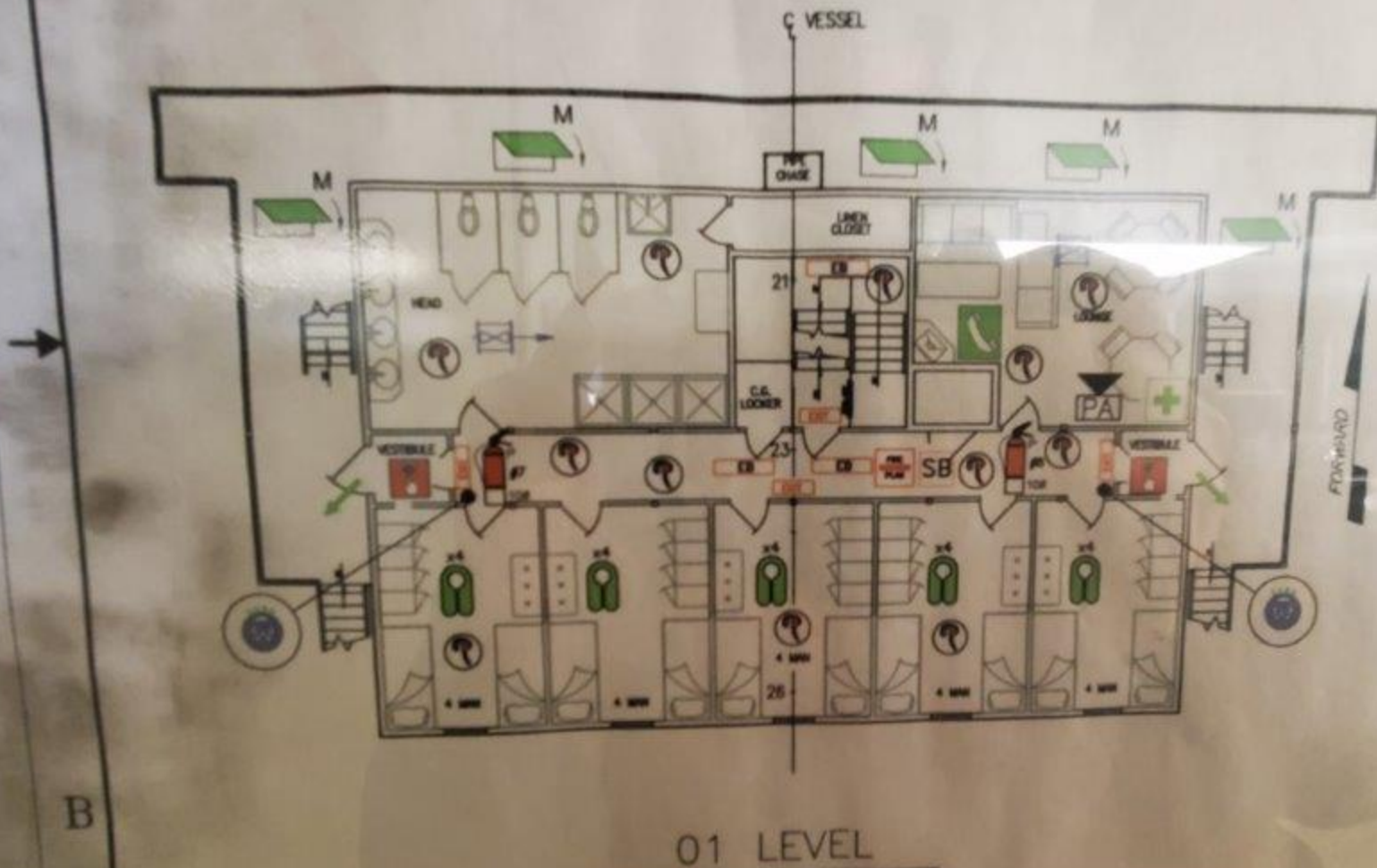
PROHIBITS
ON THE
WATERS
NATURAL
UNDER THE
STATES,
ON OF THE
ULSION
E
MINAL



03 LEVEL

INTL SHORE CONNECTION FIRE SYSTEM

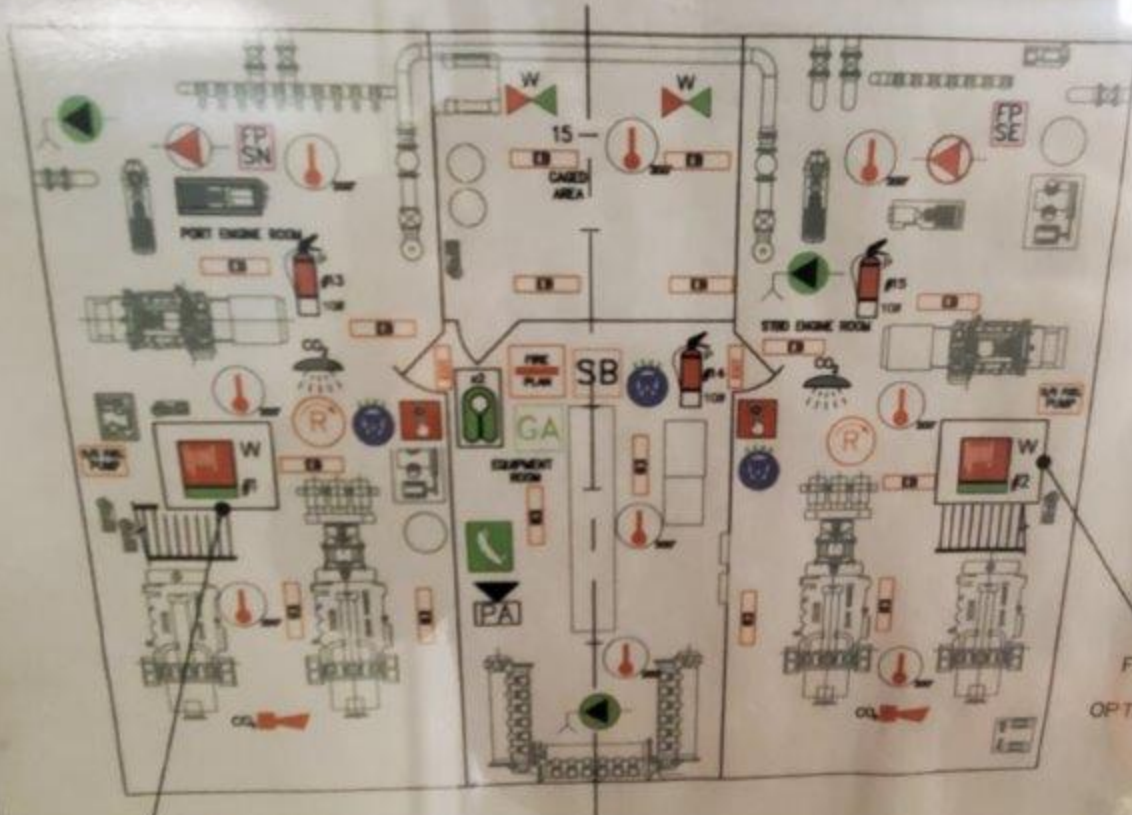




01 LEVEL



01 LEVEL

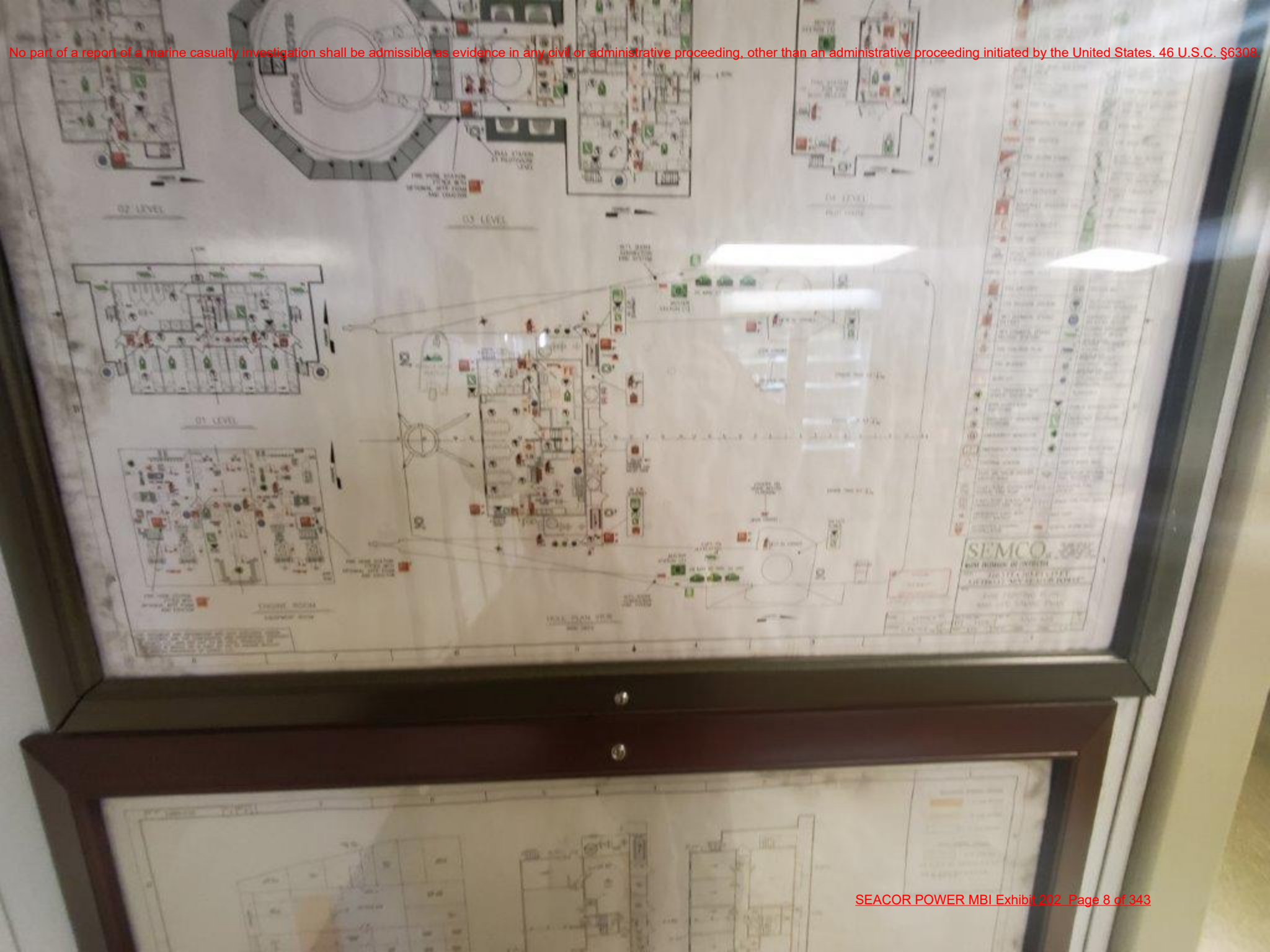


FIRE HOSE STATION
FITTED WITH
OPTIONAL AFFF FOAM
AND EDUCATOR

FIRE HOSE STATION
FITTED WITH
OPTIONAL AFFF FOAM
AND EDUCATOR

ENGINE ROOM
EQUIPMENT ROOM

THIS DOCUMENT AND INFORMATION AND DATA DISCLOSED HEREIN AND HEREWITH ARE THE CONFIDENTIAL AND PROPRIETARY PROPERTY OF SEMCO, L.L.C. AND ARE NOT TO BE USED, PRODUCED OR DISCLOSED IN WHOLE OR IN PART BY OR TO ANYONE WITHOUT THE WRITTEN PERMISSION OF SEMCO, L.L.C.





201

















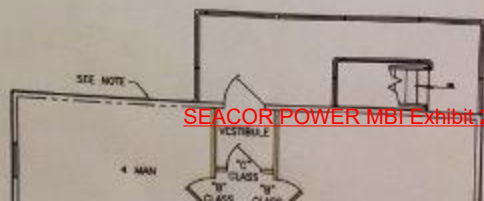


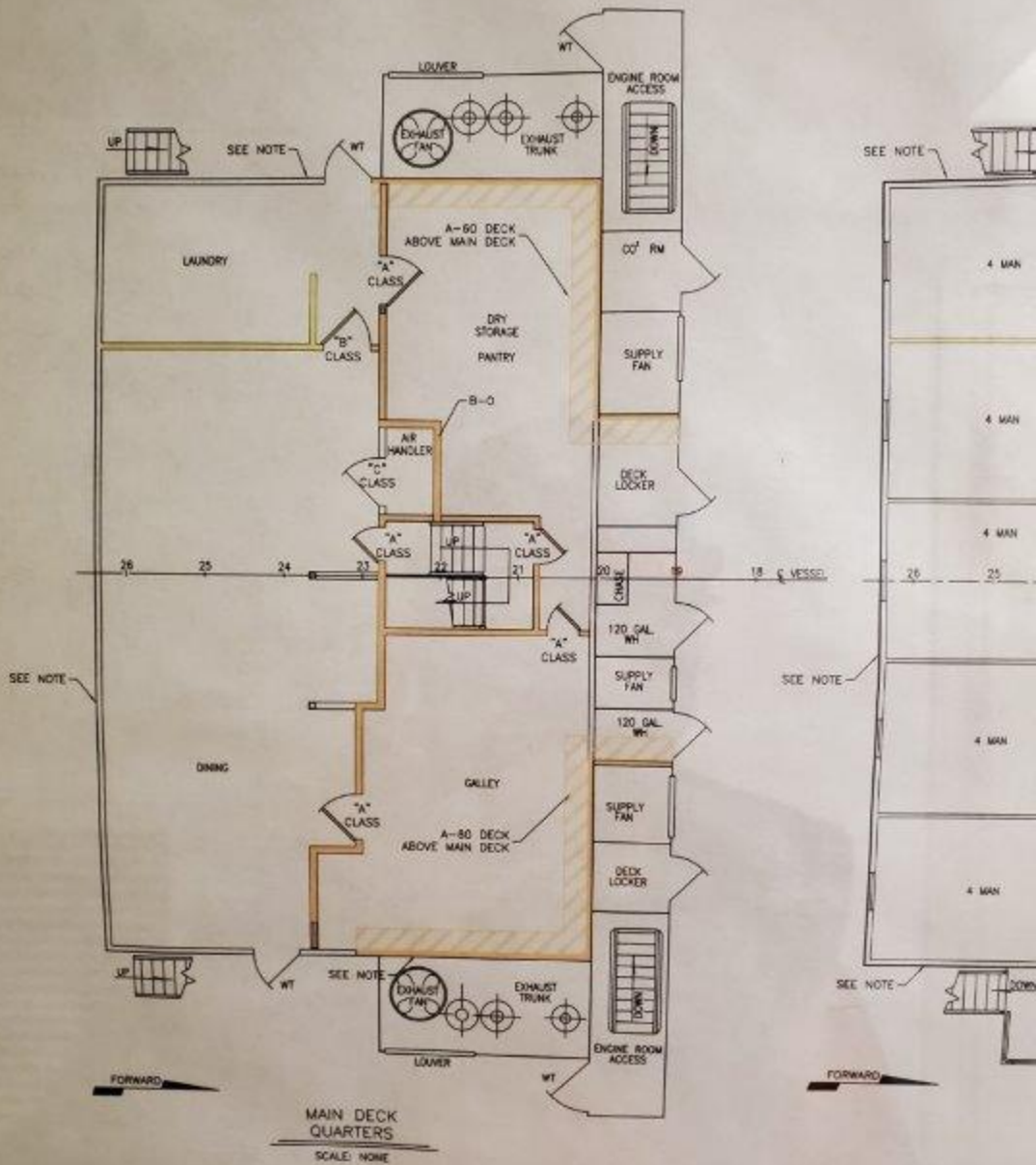


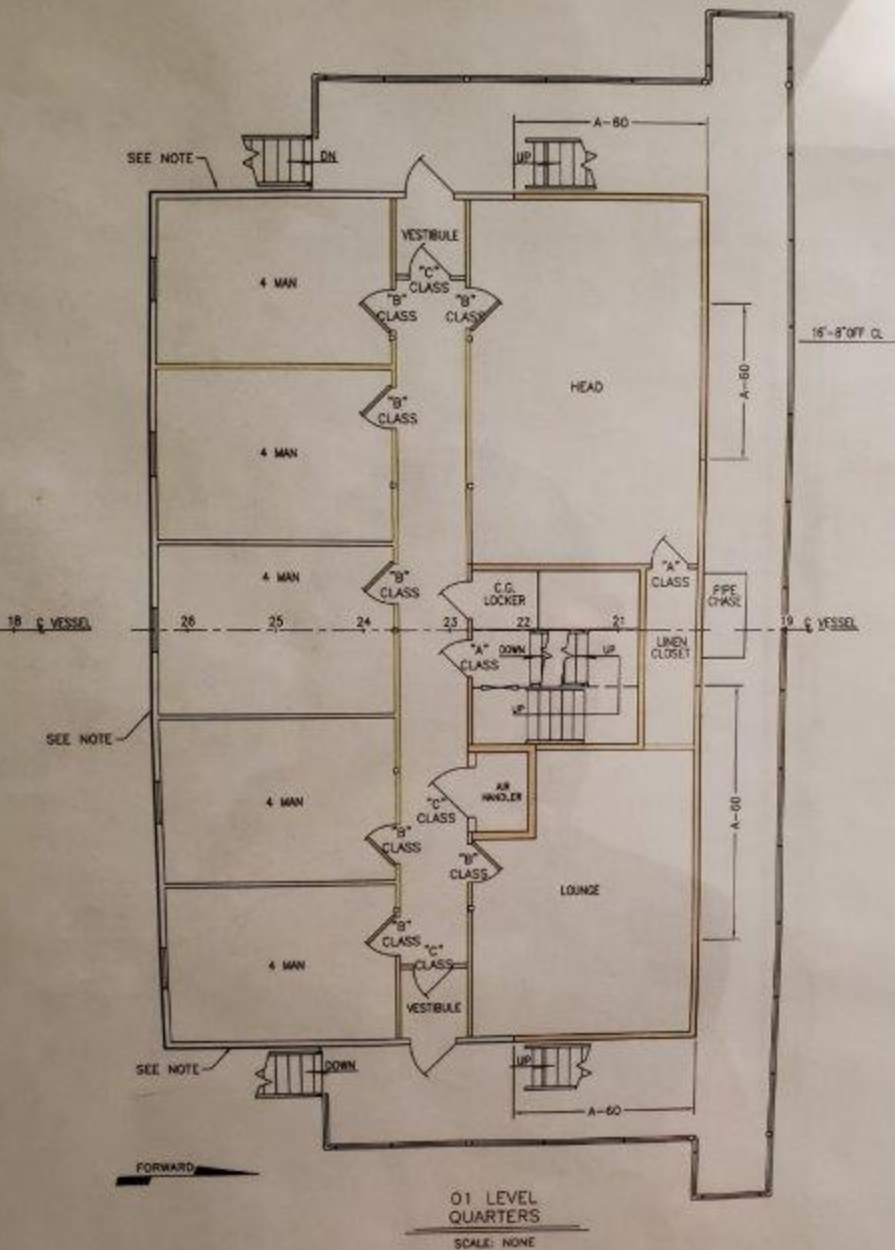


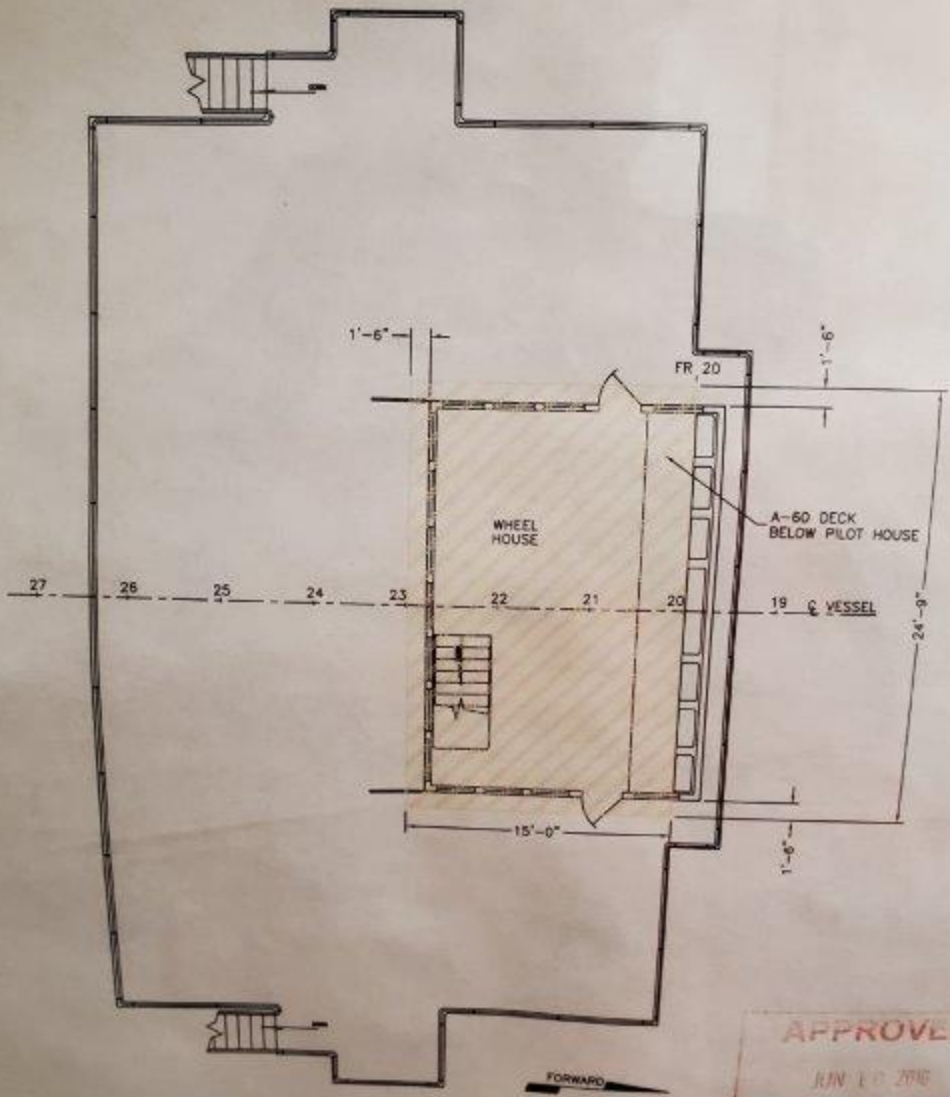












WHEELHOUSE LEVEL
SCALE: NONE

APPROVED
JUN 10 2010
USCG MARINE SAFETY UNIT
MORGAN CITY LA

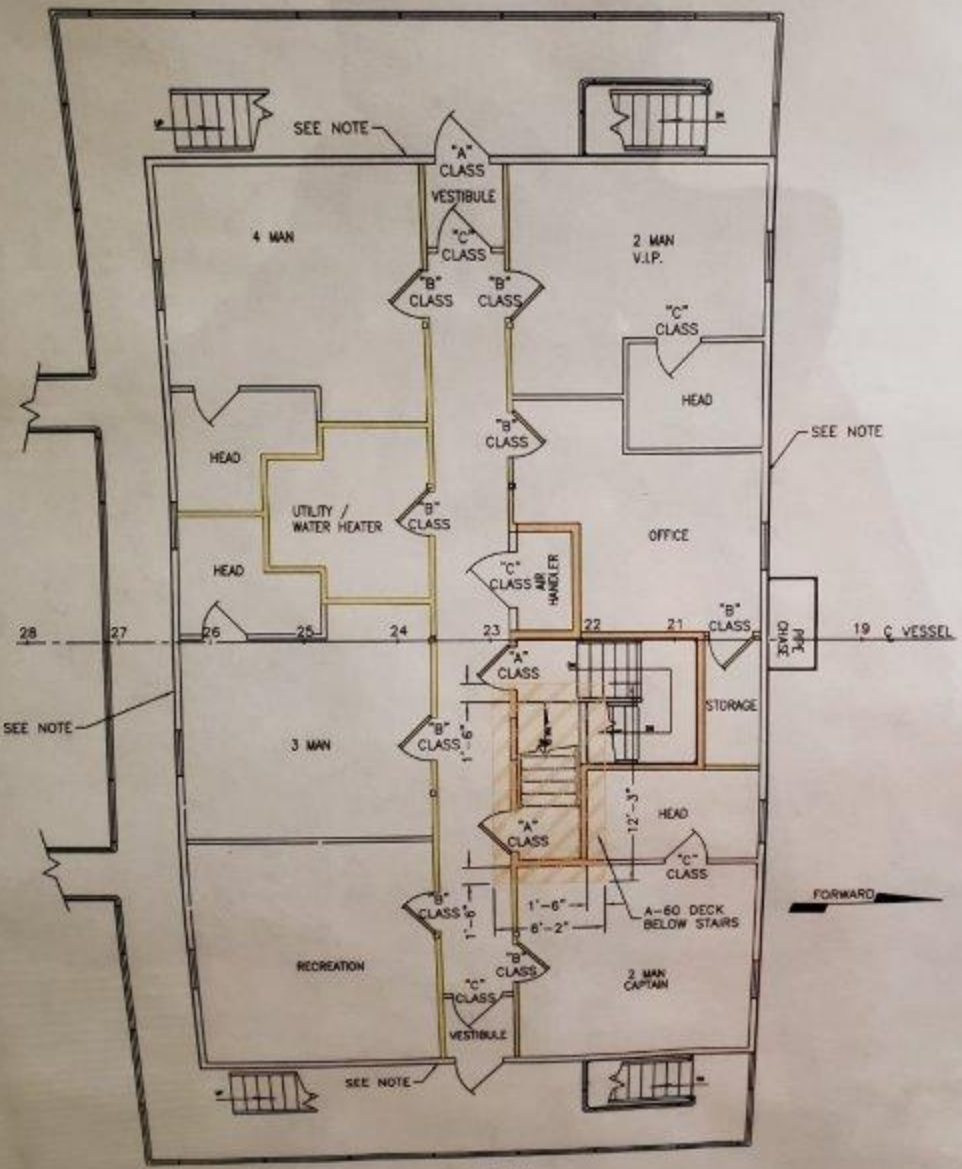
DRAWN	SEMCO	DATE
UPDATED	C. PIERCE	DATE 06/09/10

SIZE	D
SCALE	

QUARTERS

SCALE: NONE

igation shall be admissible as evidence in any civil or administrative proceeding, other than an administrative proceeding in



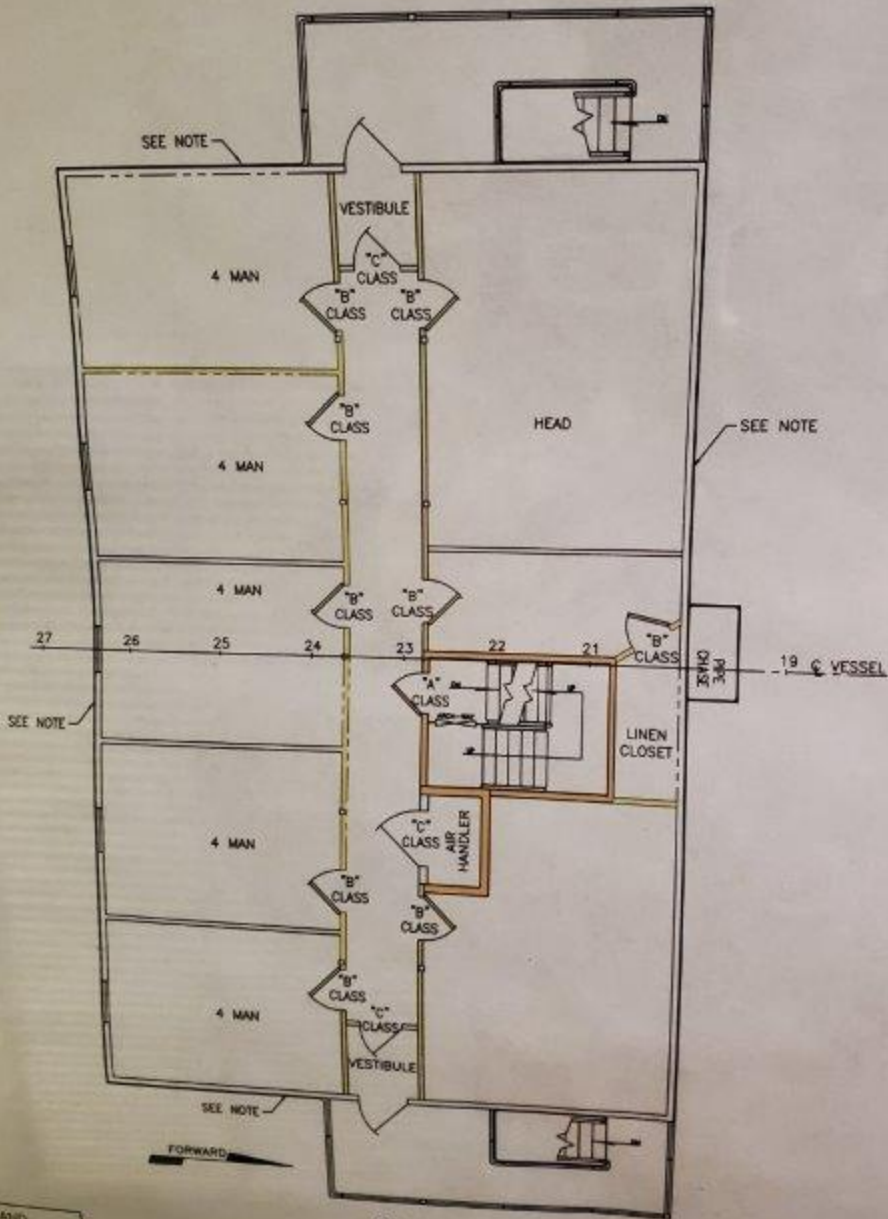
03 LEVEL QUARTERS
SCALE: NONE

ENGINE ROOM AND
EQUIPMENT ROOM

DIESEL FUEL
DAY TANK

igation shall be admissible as evidence in any civil or administrative proceeding, other than an administrative proceeding in

SCALE: NONE



USED HEREIN AND
PROPERTY OF SEMCO,
ENCLOSED IN WHOLE OR
PERMISSION OF SEMCO.

O2 LEVEL

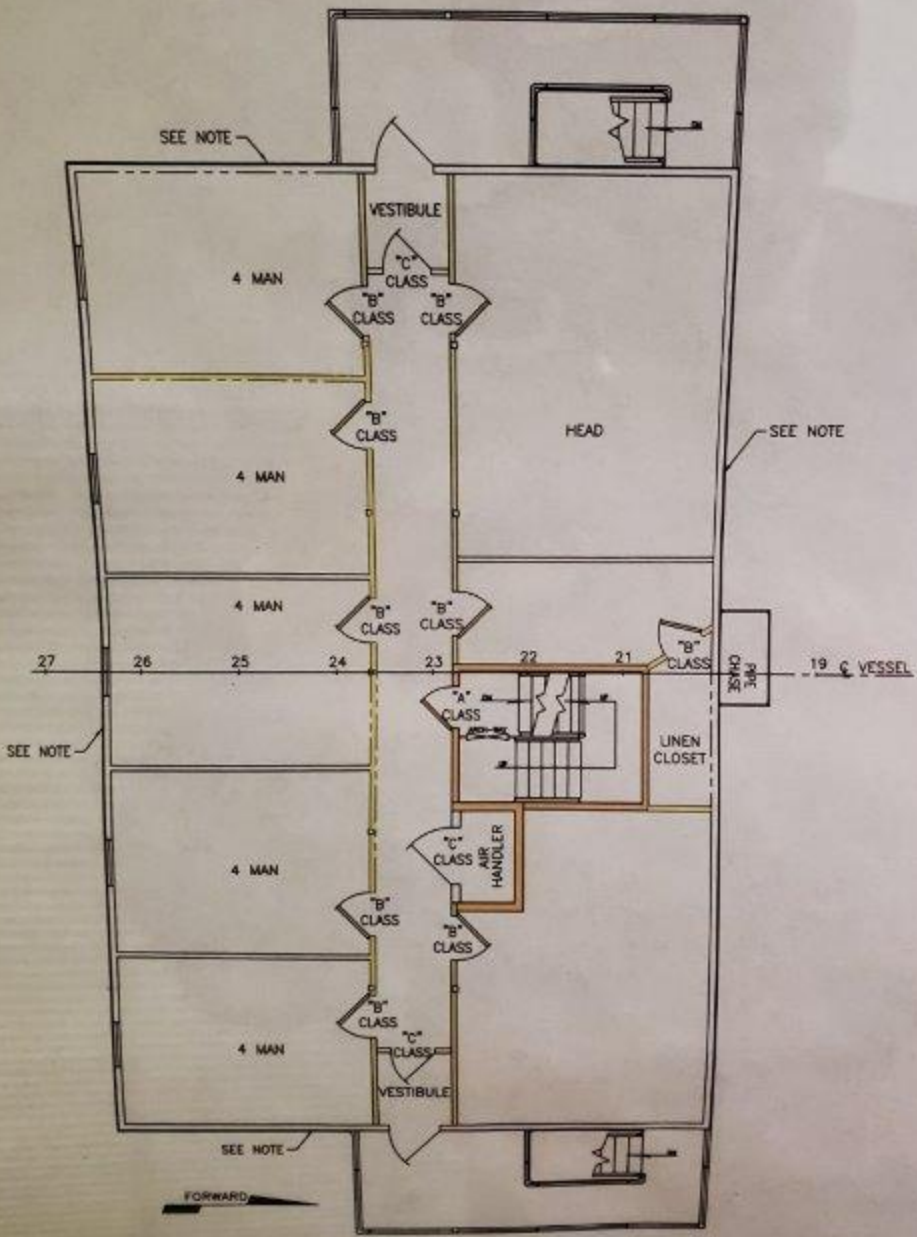
SCALE: NONE

EQUIPMENT ROOM

DAY TANK

SCALE: NONE

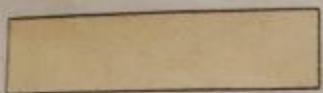
igation shall be admissible as evidence in any civil or administrative proceeding, other than an administrative proceeding in



O2 LEVEL QUARTERS

HEREIN AND PROPERTY OF SEMCO, USED IN WHOLE OR PART WITHOUT PERMISSION OF SEMCO,

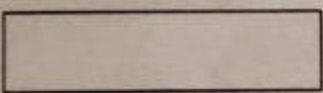
BULKHEAD SYMBOL LEGEND



"A" CLASS BULKHEAD

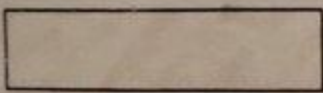


"B" CLASS BULKHEAD



"C" CLASS BULKHEAD

DECK SYMBOL LEGEND



"A-60" CLASS DECK

NOTE: ALL OTHER DECK CLASSIFICATION TO BE "A-0"

NOTE: ALL EXTERIOR BHD'S TO BE OF STEEL
OR EQUIV. U.N.O.





















Investigation shall be admissible as evidence in any civil or administrative proceeding, other than an administrative proceeding in









































CATERPILLAR

GENERATOR SET

ENGINE MODEL 3308

YEAR 2001

238 V/A

Z PRIME

180 KW

STANDBY

0.8 COS ϕ

60 HERTZ

CONTINUOUS

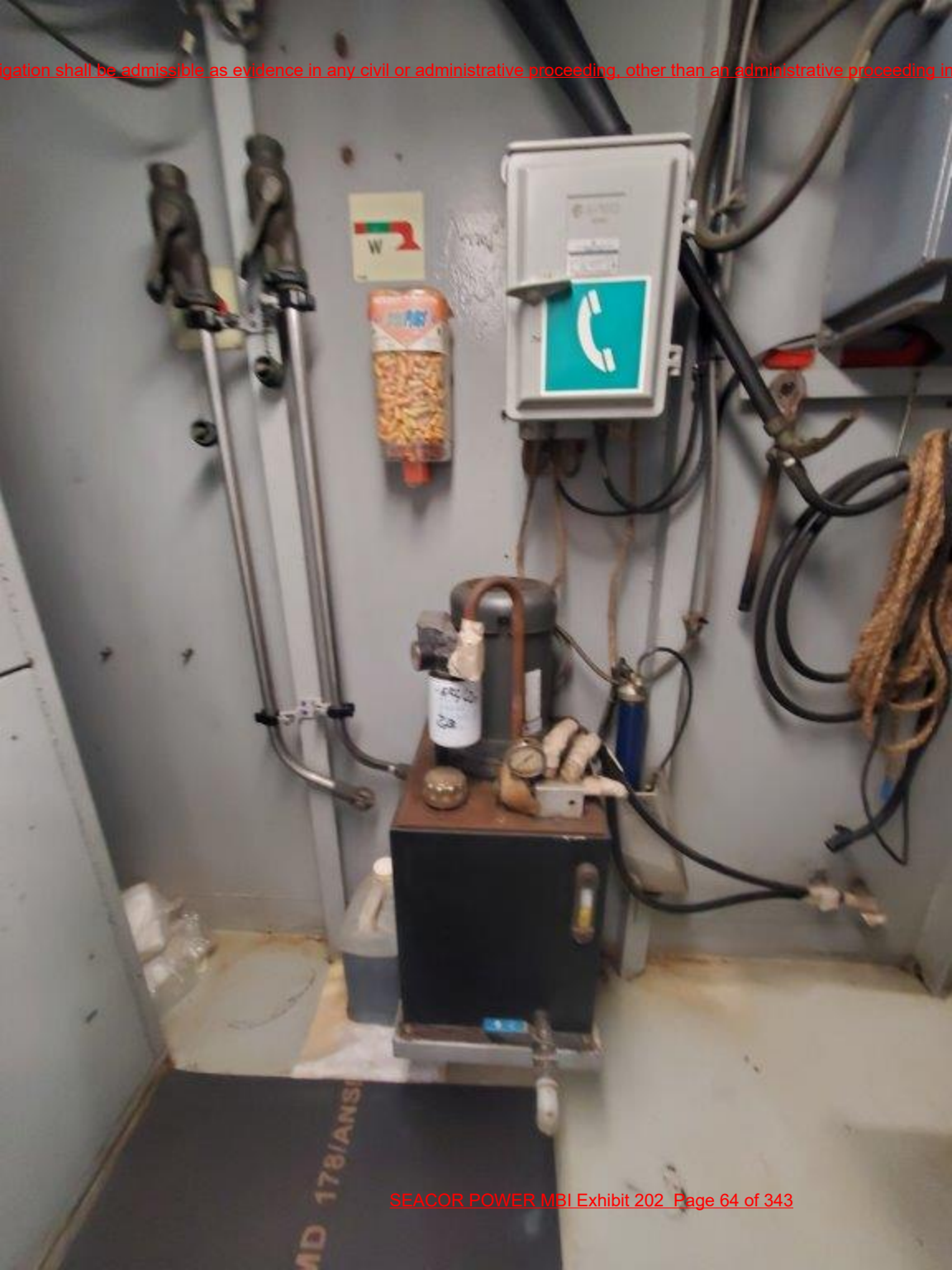
GENERATOR DATA

GENERATOR DATA DESCRIPTION

3 PHASE FU	48	WIND	1800
	9	SIZE	2
		SERIES	232
	220	VOLTS	2.2
	30	PHASE	1800
	44	FRAMES	20





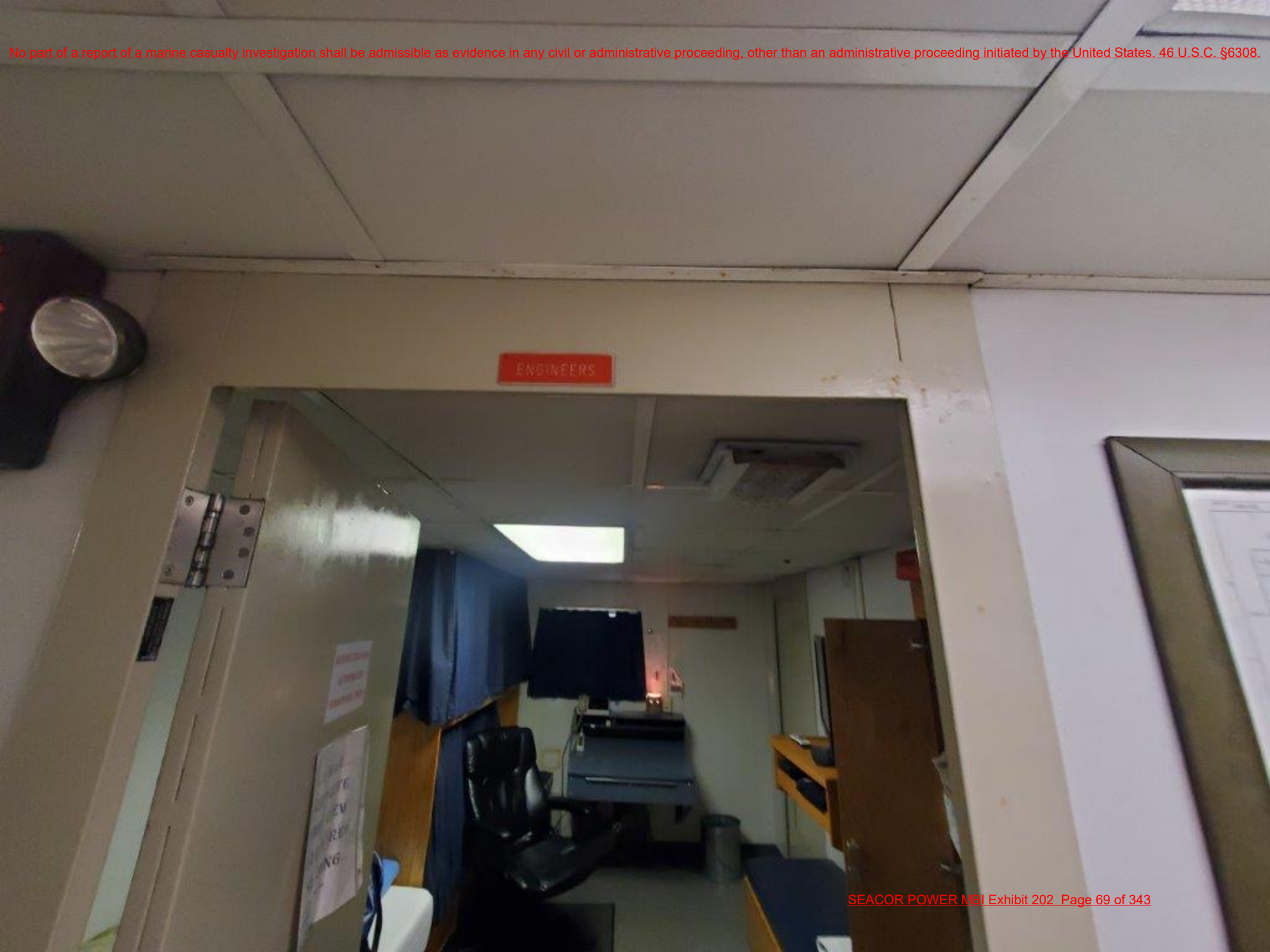




















WASH ROOM







igation shall be admissible as evidence in any civil or administrative proceeding, other than an administrative proceeding in











V.I.P











...ation shall be admissible as evidence in any civil or administrative proceeding, other than an administrative proceeding in





























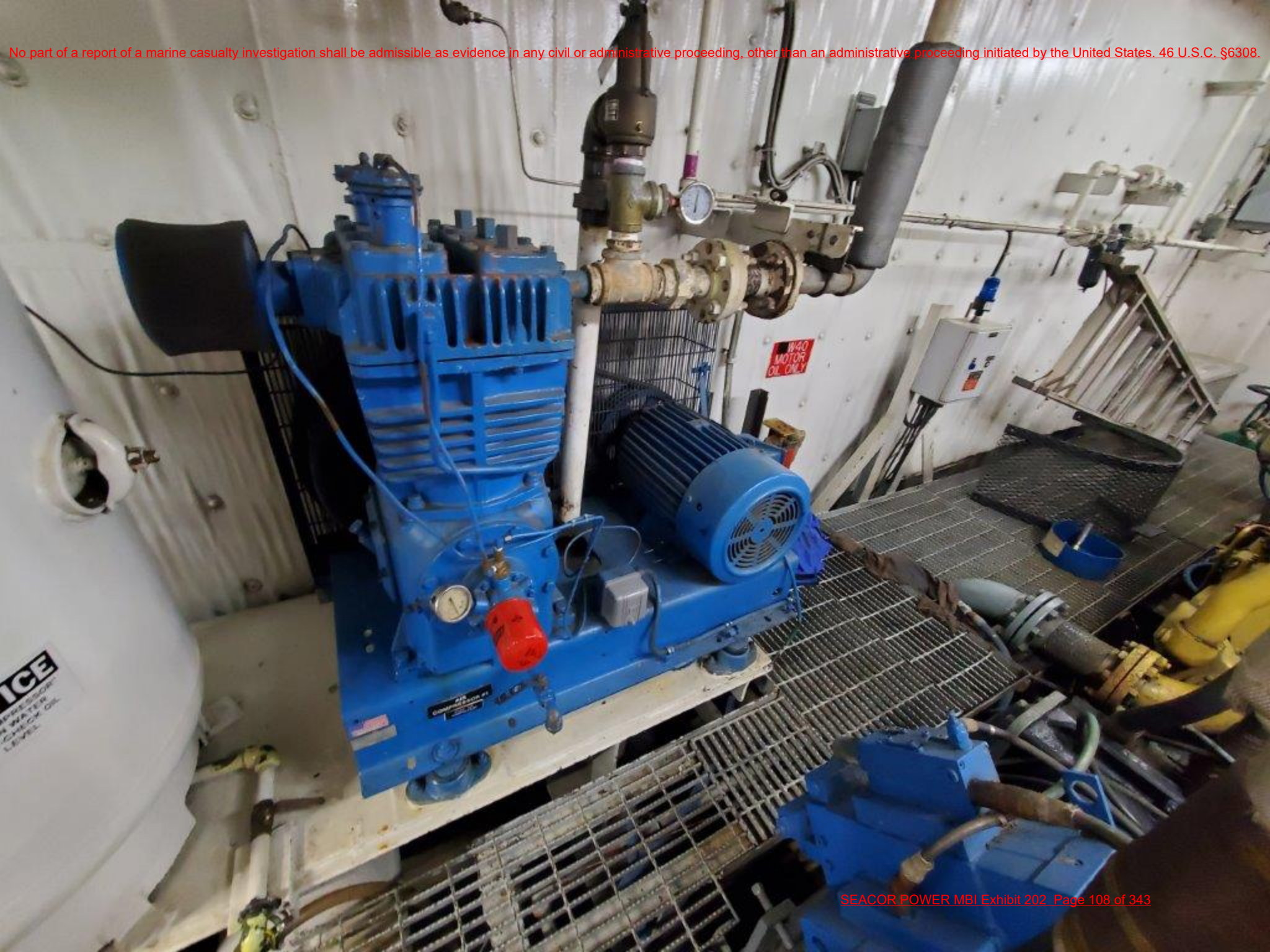








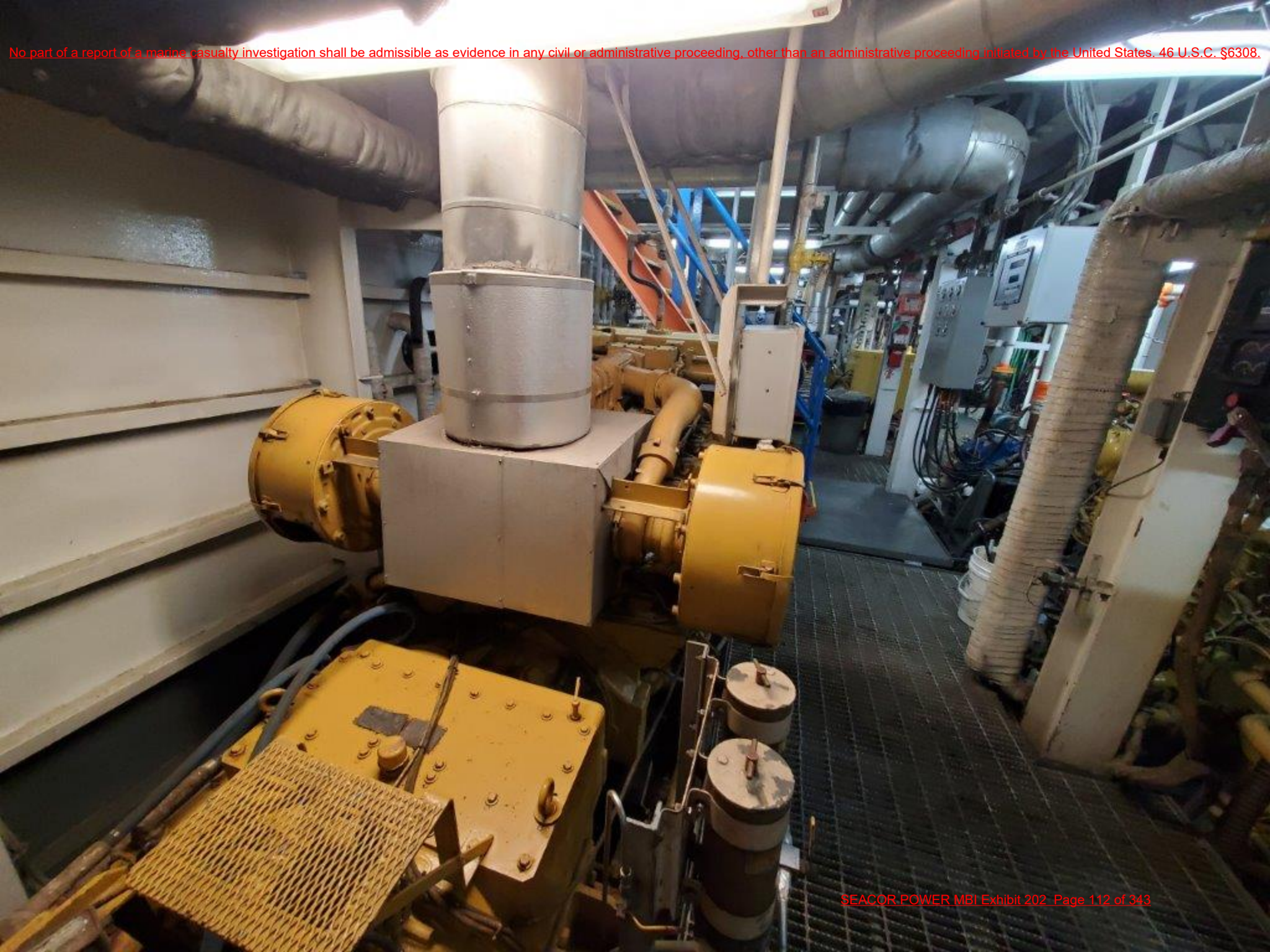






















TRANSMISSION

Part No

SERIAL NO

CUSTOMER NO

CUSTOMER NO

Three horizontal rectangular slots for handwritten information, corresponding to the labels above.

MIN. OIL PRESSURE WHEN CRUISING

CHECK OIL LEVEL WITH ENGINE RUNNING AND

IF FITTING IS PROVIDED:

APPLY GREASE TO PREVENT BURST WATER

ON MOUNTAINS WHICH EVER COMES FIRST

AND REPAIR AFTER ELEMENT WHERE APPLICABLE

THIS TRANSMISSION IS LUBRICATED AND MAINTAINED AS

REQUIRED PER THE MANUFACTURER'S INSTRUCTIONS

FOR ORDERING PARTS

1970

1970

1000000

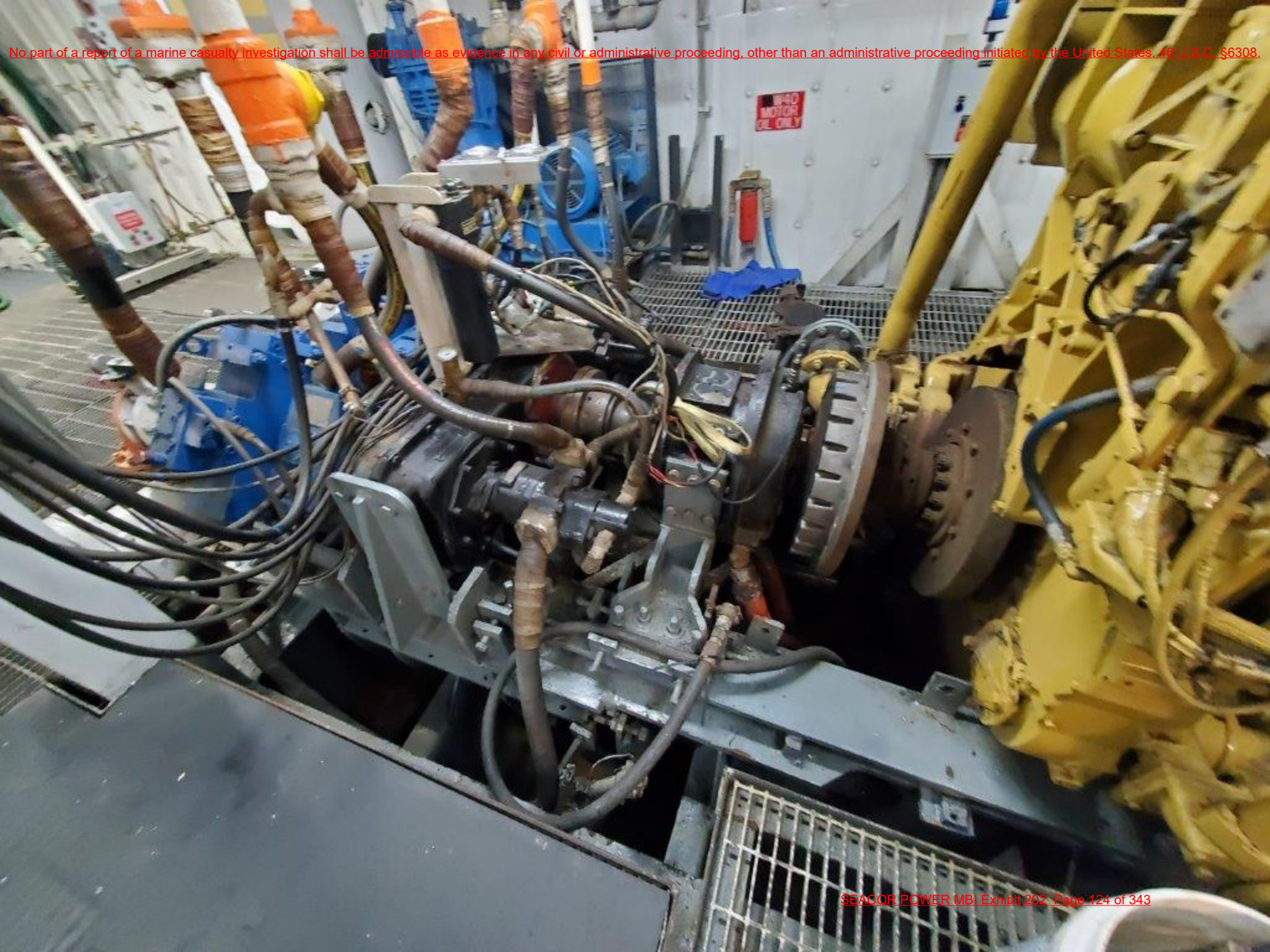


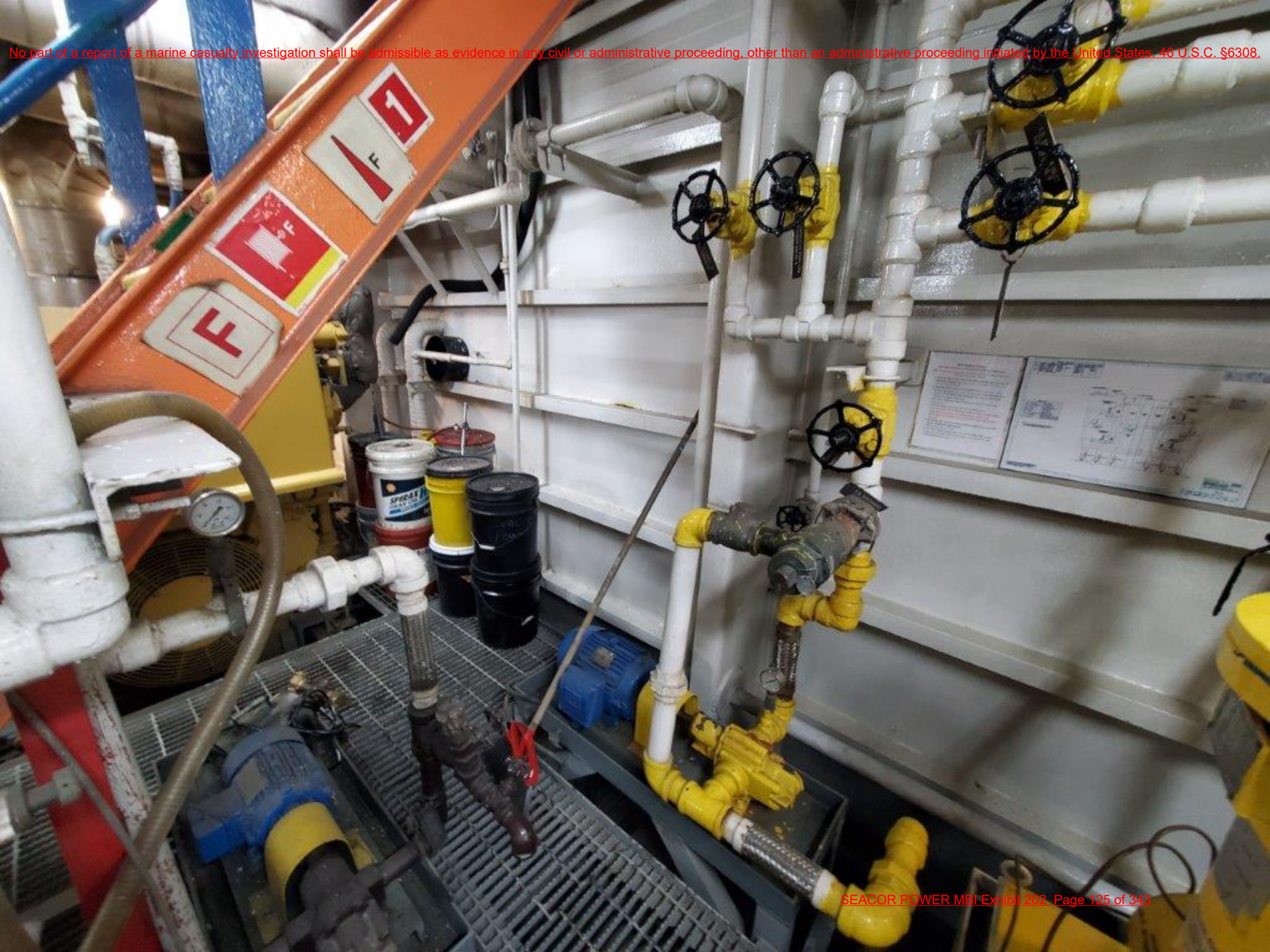


















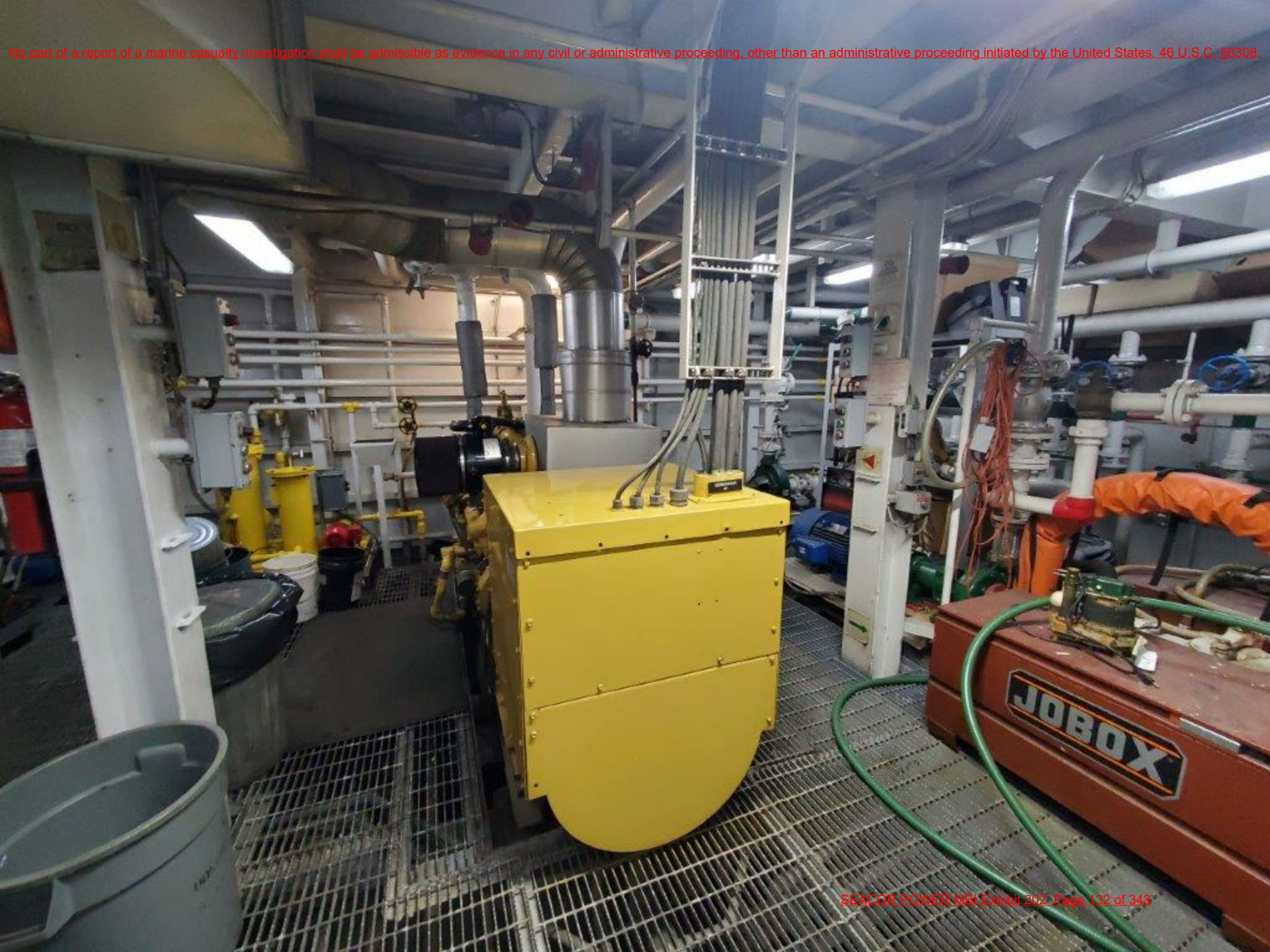
igation shall be admissible as evidence in any civil or administrative proceeding, other than an administrative proceeding in



BALDOR • RELIABLE INDUSTRIAL MOTOR

HP	104T			
AL. N.	F4361901H2			
FC	30			
P	208-230/460			
TS	78-72/35			
PM	1760	1760	PH 3	
AME	286T	1760	CLASS F	
F	1.15	CODE	H	D/S
PH	92.4	13	AF	85
AMC	40C	AMB	CONT	













EMERGENCY STEERING PROCEDURE
1. ON PILOT HOUSE, TURN STEERING RELAY TO "STOP"
2. TURN ON EMERGENCY STEERING SYSTEM
3. SET ALL STEERING VALVES TO "EMERGENCY"
4. SET ALL STEERING VALVES TO "EMERGENCY"
5. SET ALL STEERING VALVES TO "EMERGENCY"
6. SET ALL STEERING VALVES TO "EMERGENCY"
7. POWER OFF











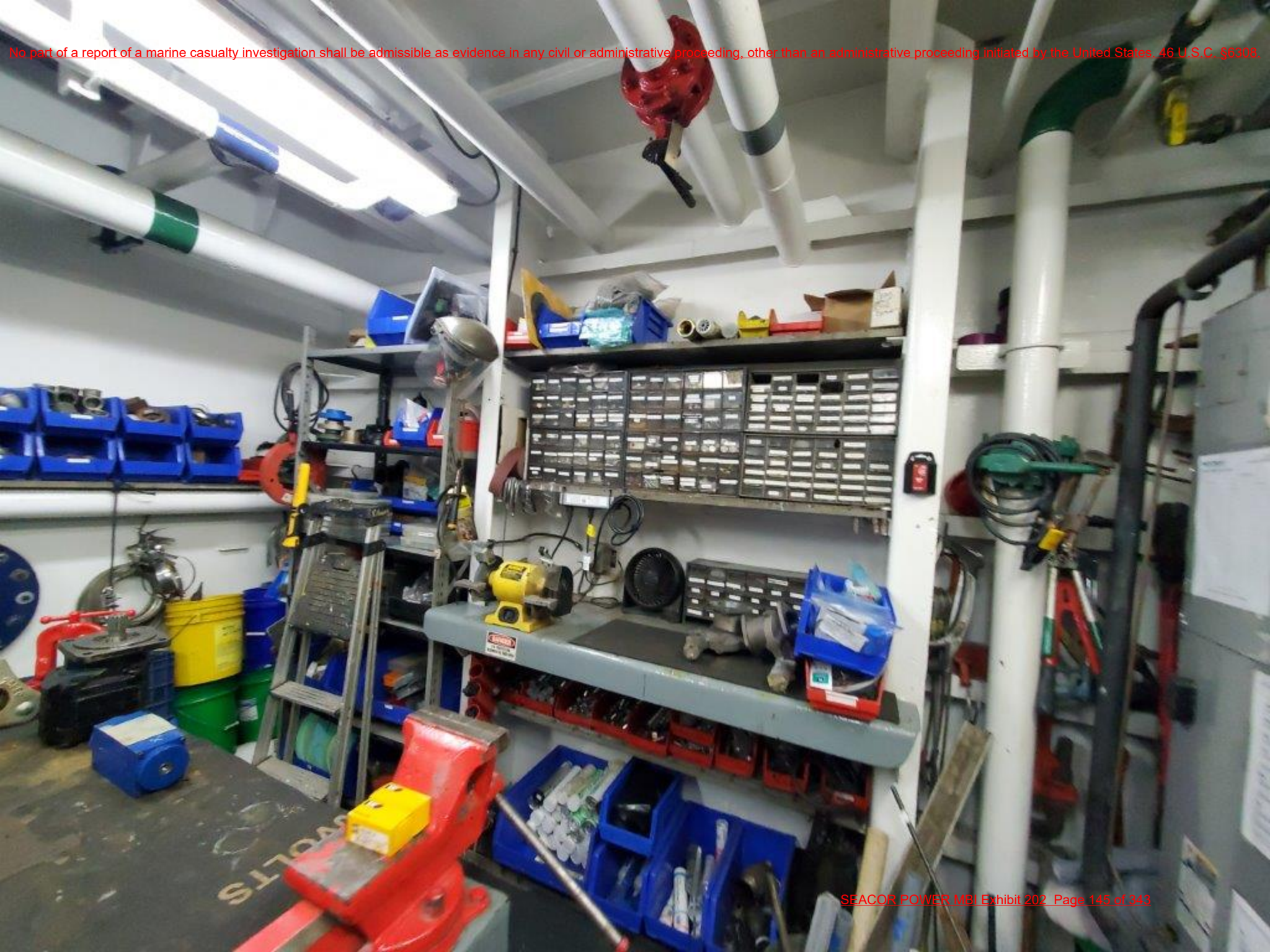


EMERGENCY STEERING PROCEDURE

1. IN PILOT HOUSE, TURN STEERING SELECTOR TO "LOCAL"
2. TURN BOTH #1 STEERING PUMPS TO "FORWARD" POSITION - STANDARD ENGINE ROOM AND EMERGENCY OPERATIONAL POSITION
3. OPEN ALL STEERING VALVES TO STEERING VALVE IN "PILOT"
4. CLEAR ALL STEERING VALVES TO STEERING VALVE IN "ENGINE"
5. TURN ONE TRAIL SELECTOR TO "LOCAL" POSITION













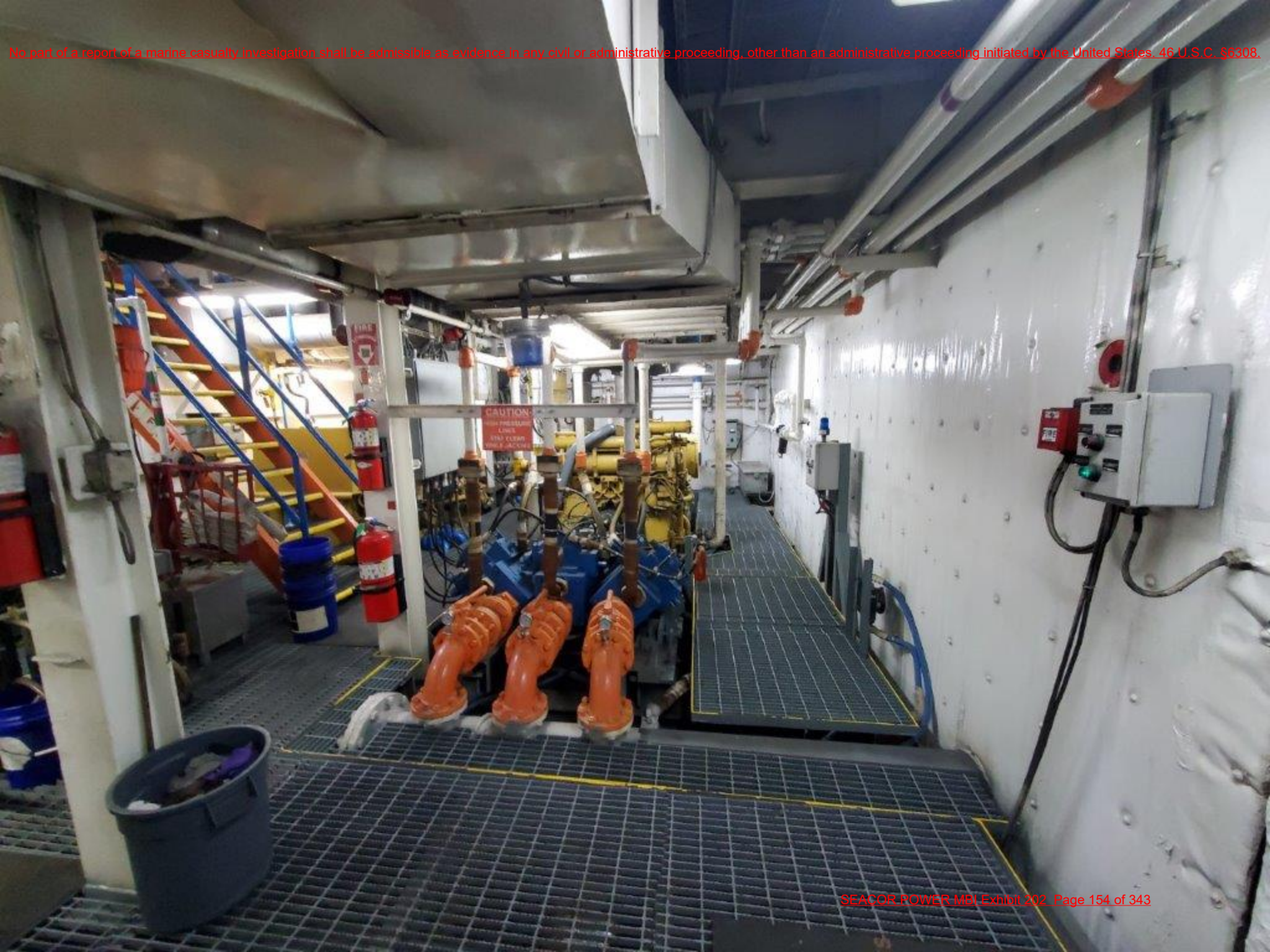








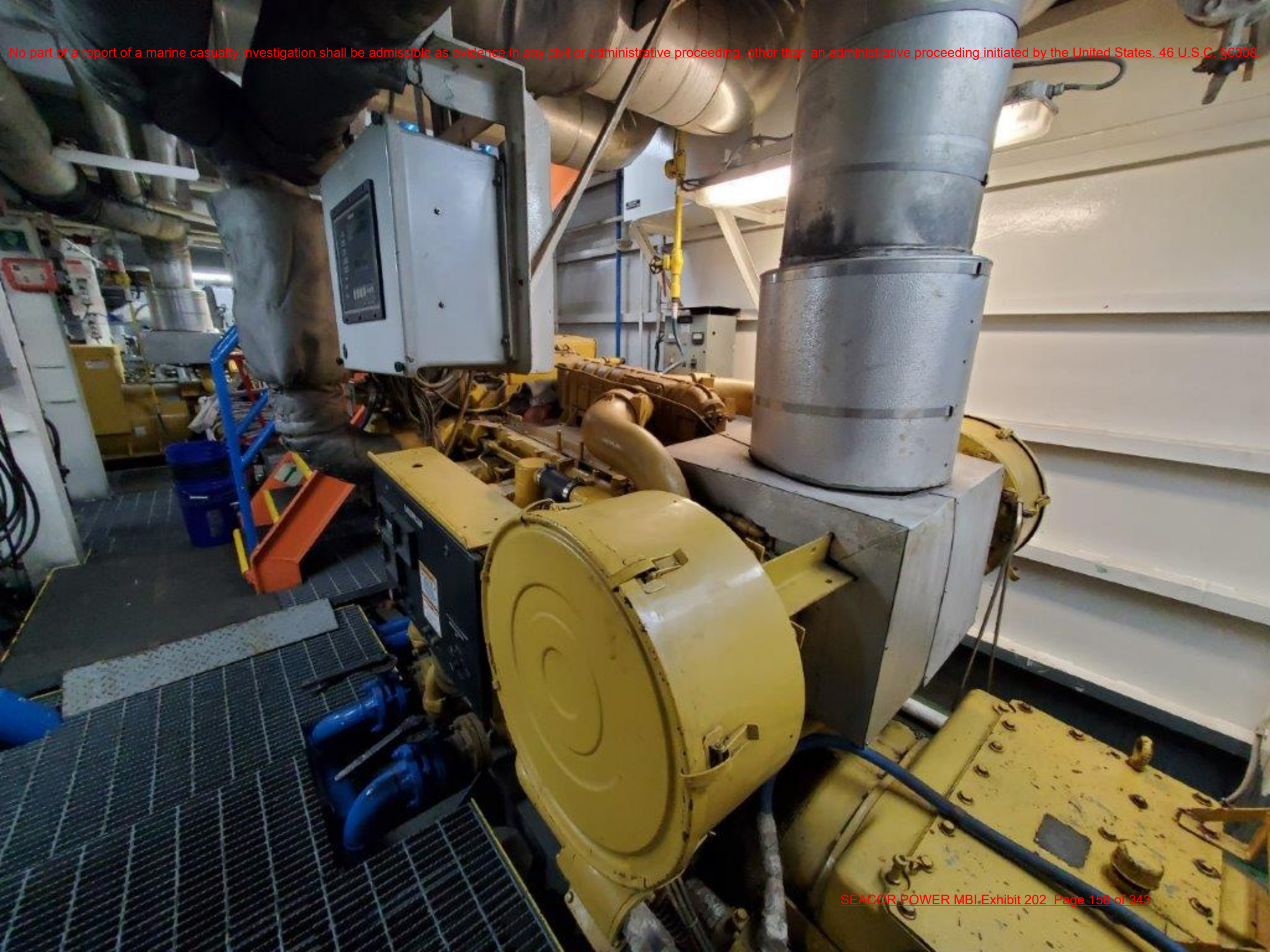




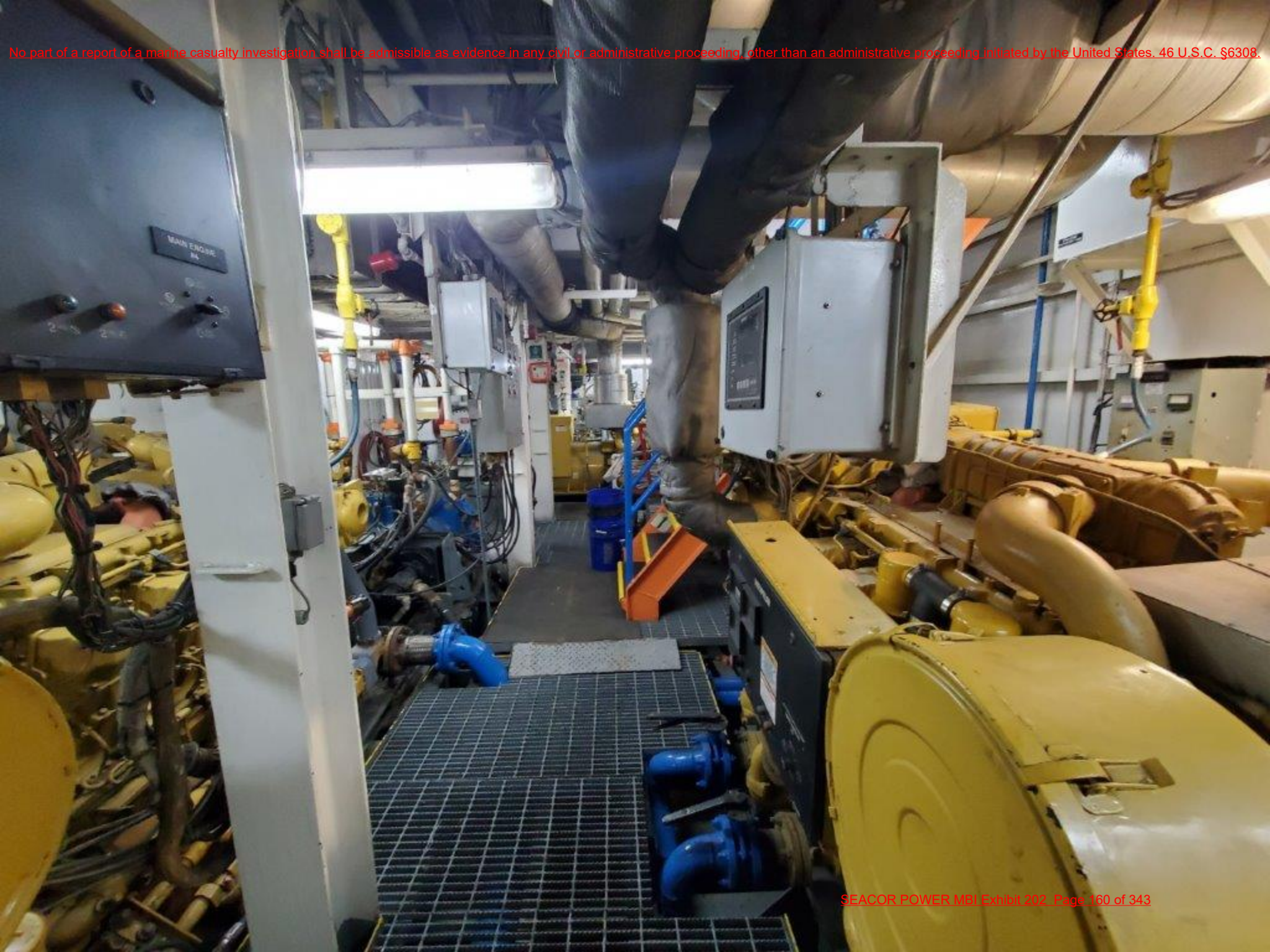


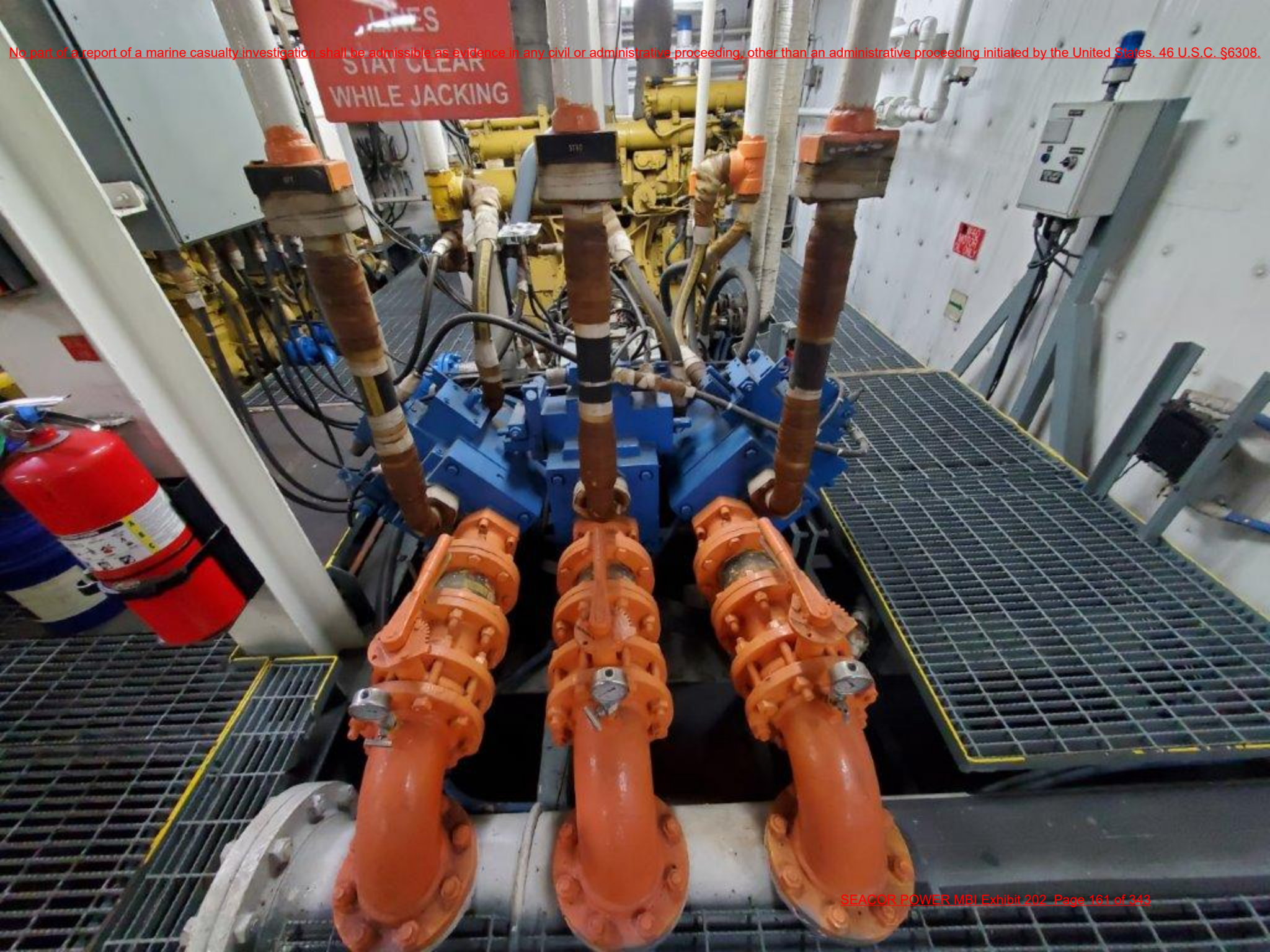






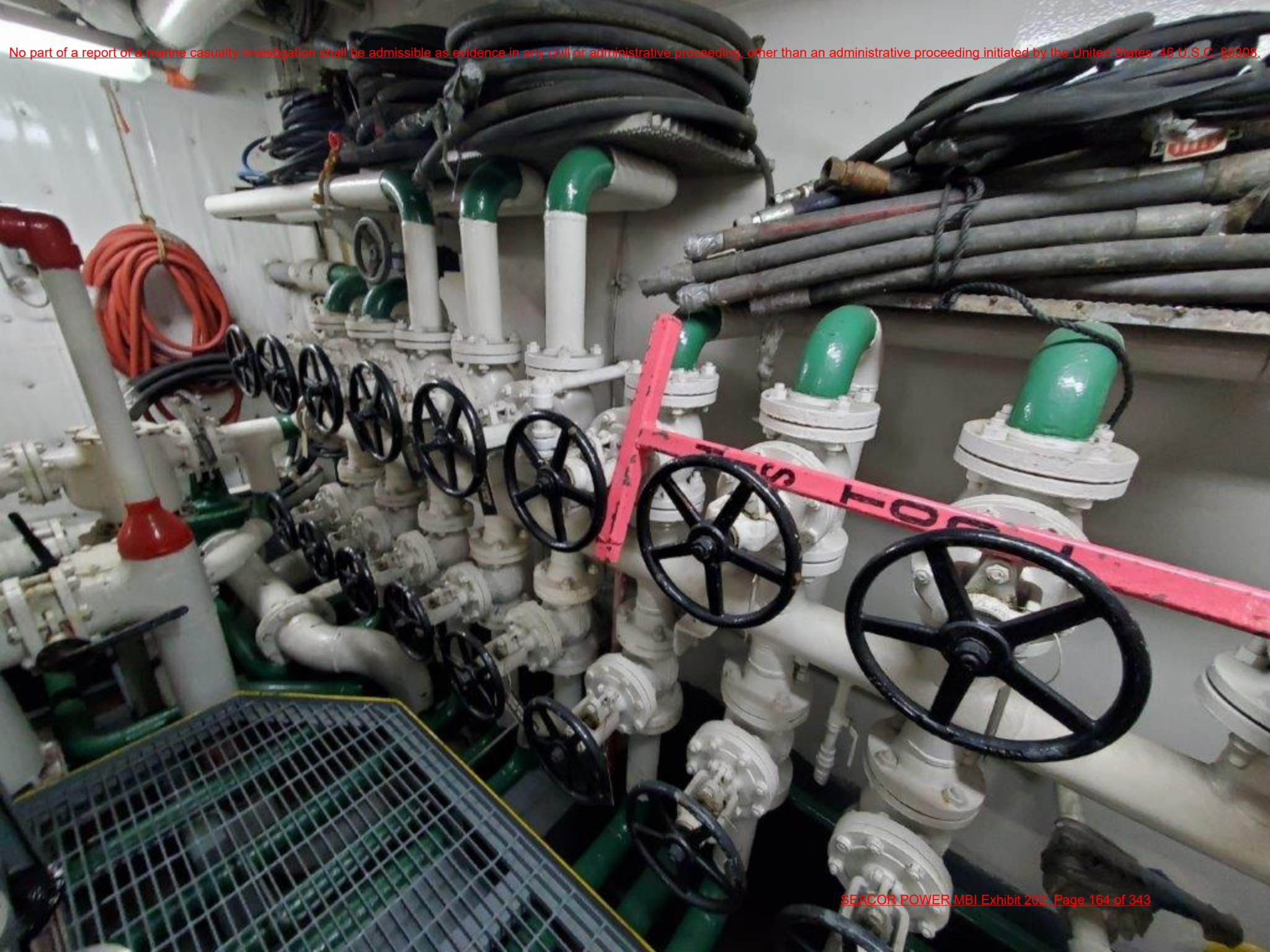


















tion shall be admissible as evidence in any civil or administrative proceeding, other than an administrative proceeding in





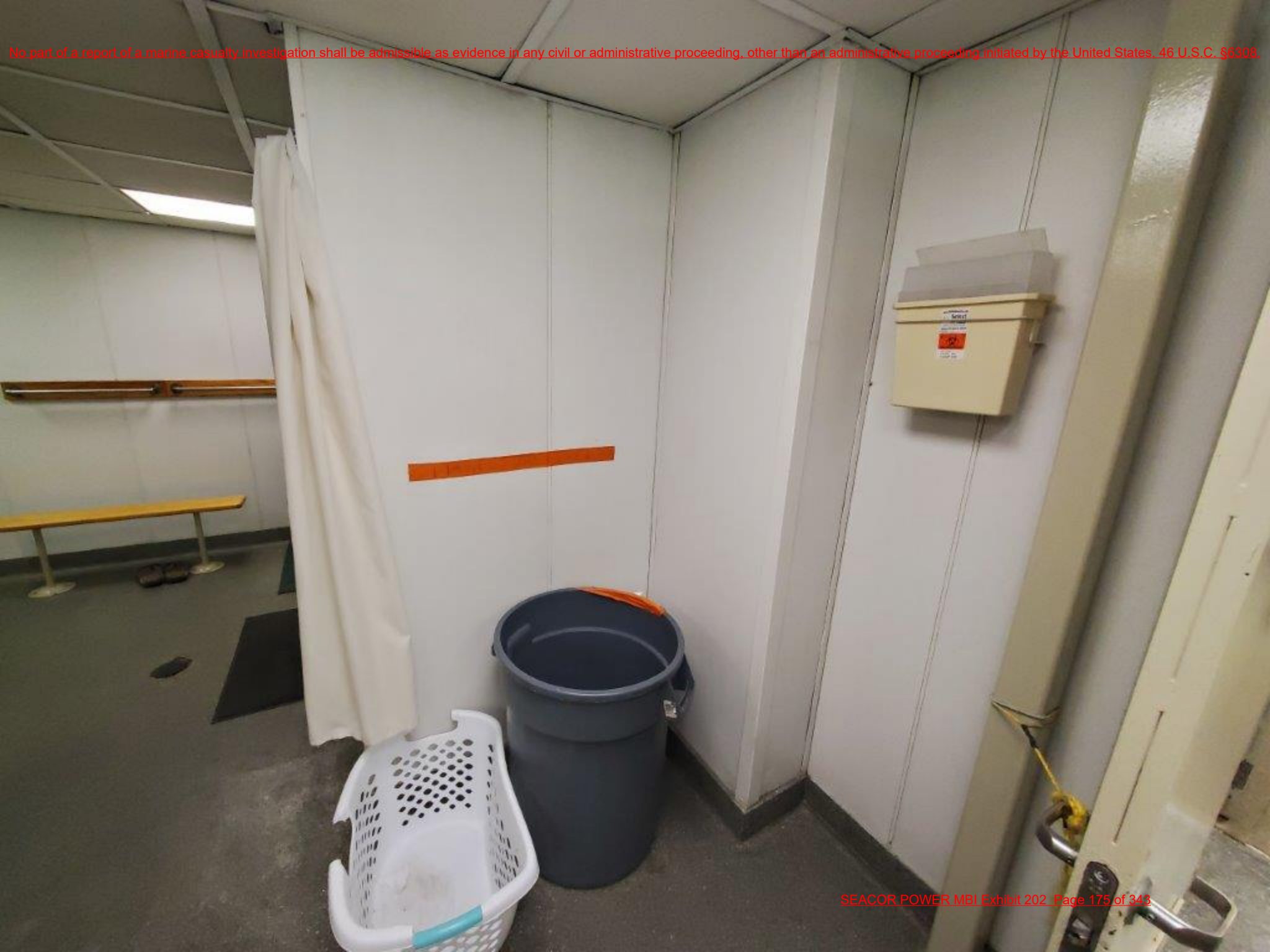














































CO₂
CO₂ FIRE SUPPRESSION SYSTEM
PORT ENGINE ROOM
IN CASE OF FIRE
IF YOU ARE IN THE PORT ENGINE ROOM
AND YOU HEAR THE ALARM BELL RING
OR YOU SEE THE RED LIGHTS FLASH
OR YOU SMELL THE STRONG ODOR OF
SULFUR DIOXIDE
IMMEDIATELY LEAVE THE PORT ENGINE ROOM
AND GO TO THE MAIN DECK
OR TO THE DECK ABOVE DECK
DO NOT RE-ENTER THE PORT ENGINE ROOM
UNTIL YOU ARE TOLD TO DO SO BY THE
OFFICER OF THE VESSEL

PORT ENGINE ROOM
VALVE RELEASE

PORT ENGINE ROOM
CYLINDER RELEASE

ESD
PUSH TO
SHUTDOWN

WASTE OIL

CONFINED
SPACE



igation shall be admissible as evidence in any civil or administrative proceeding, other than an administrative proceeding in



igation shall be admissible as evidence in any civil or administrative proceeding, other than an administrative proceeding in











igation shall be admissible as evidence in any civil or administrative proceeding, other than an administrative proceeding in





BLASTER™

ND BLASTER™

HIGH PERFORMANCE

SOLID.STATE.

MADE IN THE USA



COMMERCIAL STORAGE
TANK WATER HEATER



ANSI / NSF-5

STED
22U1

MODEL NUMBER	SERIAL NUMBER	ITEM ID / PART NUMBER
6SFE 100	0909M000824	9290670035

TS/ELEMENT	90033670
NO.	480
TS-AC	3/1
PHASES	

MAX W. TTS

AC VOLTS 480V
 NO. ELEMENTS 3
 TOTAL KW 18.0KW

KW EACH 6.0KW
 KIT NO. 9003362

STATE INDUSTRIES, INC
ASHLAND, OHIO, U.S.A.













































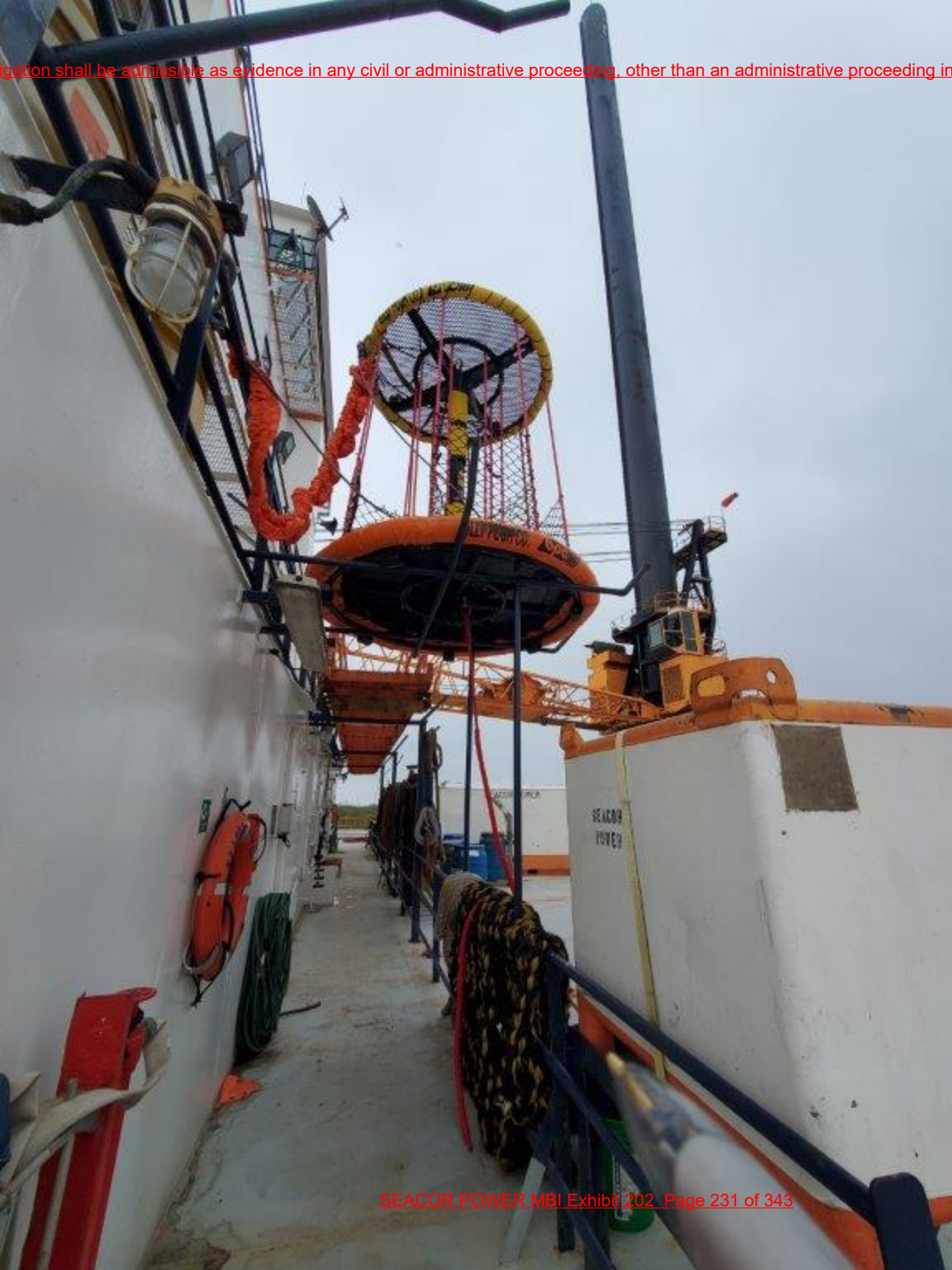






























IMO 8765682



4













igation shall be admissible as evidence in any civil or administrative proceeding, other than an administrative proceeding in













igation shall be admissible as evidence in any civil or administrative proceeding, other than an administrative proceeding in









SEACOR POWER

CAUTION
OXYGEN DEPLETED ENVIRONMENT
MAY BE PRESENT,
VENTILATE PROPERLY
PRIOR TO ENTRY



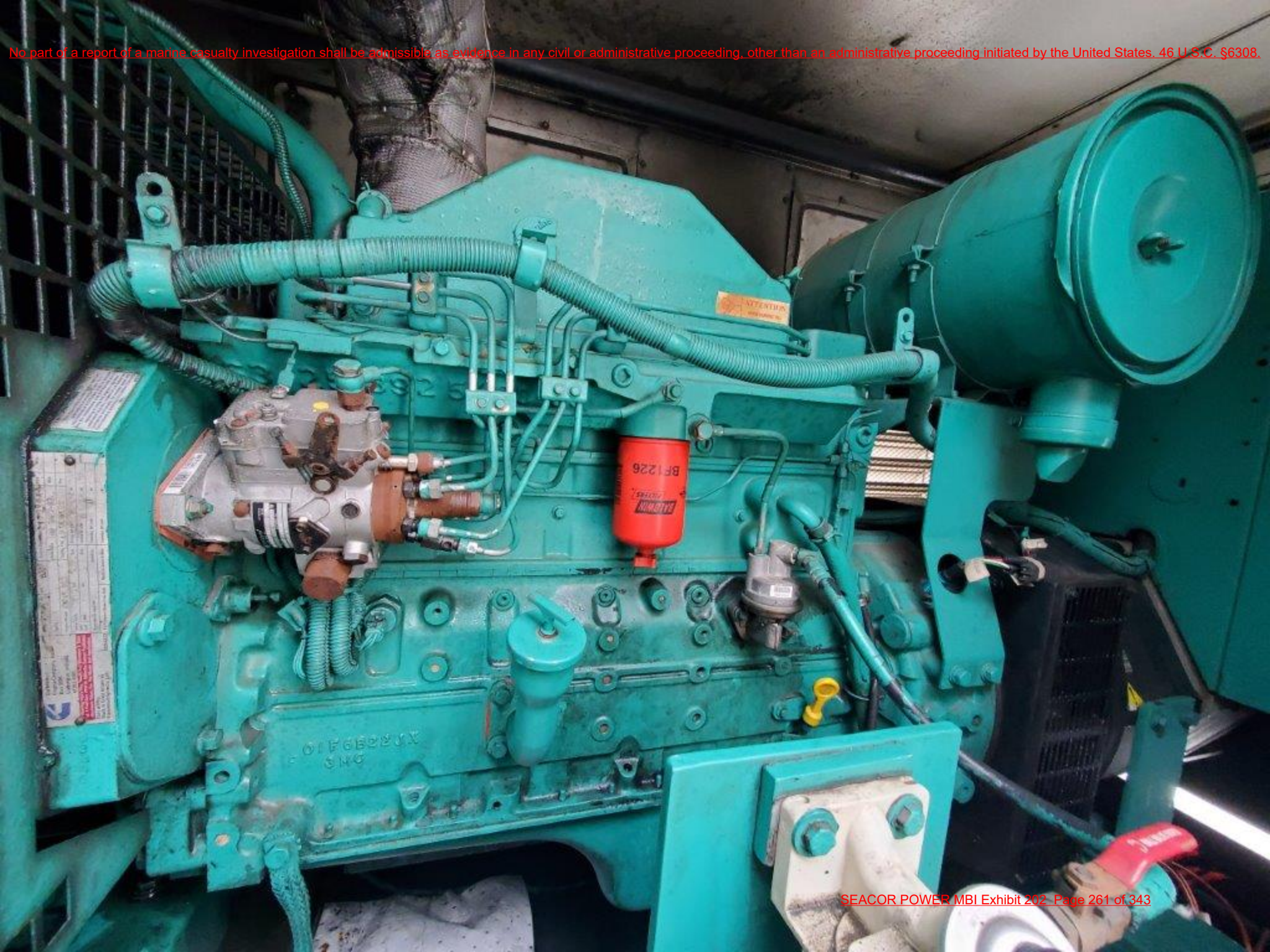
 Cummins,
 Engine Company, Inc.
 Box 3005
 Columbus, Indiana
 47202-3005

**Warning Injury May Result And Warranty is Void
 if Fuel Rate RPM Or Altitudes Exceed Published
 Maximum Values For This Model And Application.**

Date of Mfg.
 Made in Great Britain by
 Cummins Engine Co. Ltd.

3284222

Days	CPL	Engine Speed No.	Timing - IDC	Prime HP /KW
Eqnly		Cust Spec	Exh	Prime HP /KW
Engine Model	Int		Exh	Standby HP /KW
Valve Inch	Int		Exh	Standby HP /KW
Inch MM	Int		mm ³ /st	Standby HP /KW
Fuel rate at rated HP			mm ³ /st	Standby HP /KW
For Constant Speed Use Only			Made in Great Britain	Standby HP /KW



























































MAGNETIC COMPASS SAFE DISTANCE
STANDARD MAGNETIC COMPASS 0.5M
STEERING MAGNETIC COMPASS 0.5M

GYROCOMPASS HORIZONTAL STAND 水平スタンド	MODEL 製品形式	KX223
	MASS 質量	21.5 kg
	SER NO. 製造番号	
	DATE 製造年月	
Yokogawa Denshikiki Co., Ltd. Made in Japan		



















TOKYO
KEIKI
REPEATER STAND
TYPE BH-31-1

SER. NO.	
DATE	

TOKYO KEIKI INC. MADE IN JAPAN











Model: TT-7009E
SAILOR 900 VSAT ADU (20W)
P/N: 407009E-THR Rev.: A.110
S/N: 81321788
IP Class x6

Prod.: 2020/20



Compass Safe Distance: 1,7m
Thrane & Thrane A/S trading as Cobham SATCOM
Industrivej 30, DK-8490 Pandrup Denmark
































igation shall be admissible as evidence in any civil or administrative proceeding, other than an administrative proceeding in

**IN CASE OF POWER LOSS
ON EMERGENCY PANEL
GENERAL ALARM MUST
BE PUT BACK ON WHEN
POWER IS RESTORED**

 **POWER ON**

ALARM CONTROL UNIT

DETECTION ZONES

ZN1 FIELD HOUSE	ZN2 EMERGENCY GEN	ZN3 03 LEVEL	ZN4 02 LEVEL
ZN5 01 LEVEL	ZN6 MAIN DECK	ZN7 ENGINE RM STBD	ZN8 EQUIPMENT RM
ZN9 ENGINE RM PORT	ZN10 SPARE	ZN11 BOW THRUSTER	ZN12 MECHANICAL RM
ZN13 MAIN DECK ABOVE CEILING	ZN14 01 DECK ABOVE CEILING	ZN15 02 DECK ABOVE CEILING	ZN16 03 DECK ABOVE CEILING

CONTROL OUTPUTS

TRIP BELL			DISARM SILENCE

TROUBLE

- TRIPPER SUPPLY
 - TRIPPER SUPPLY
 - GROUND FAULT
 - OVERCURREN
- Alarm
 Lock test

ALARM

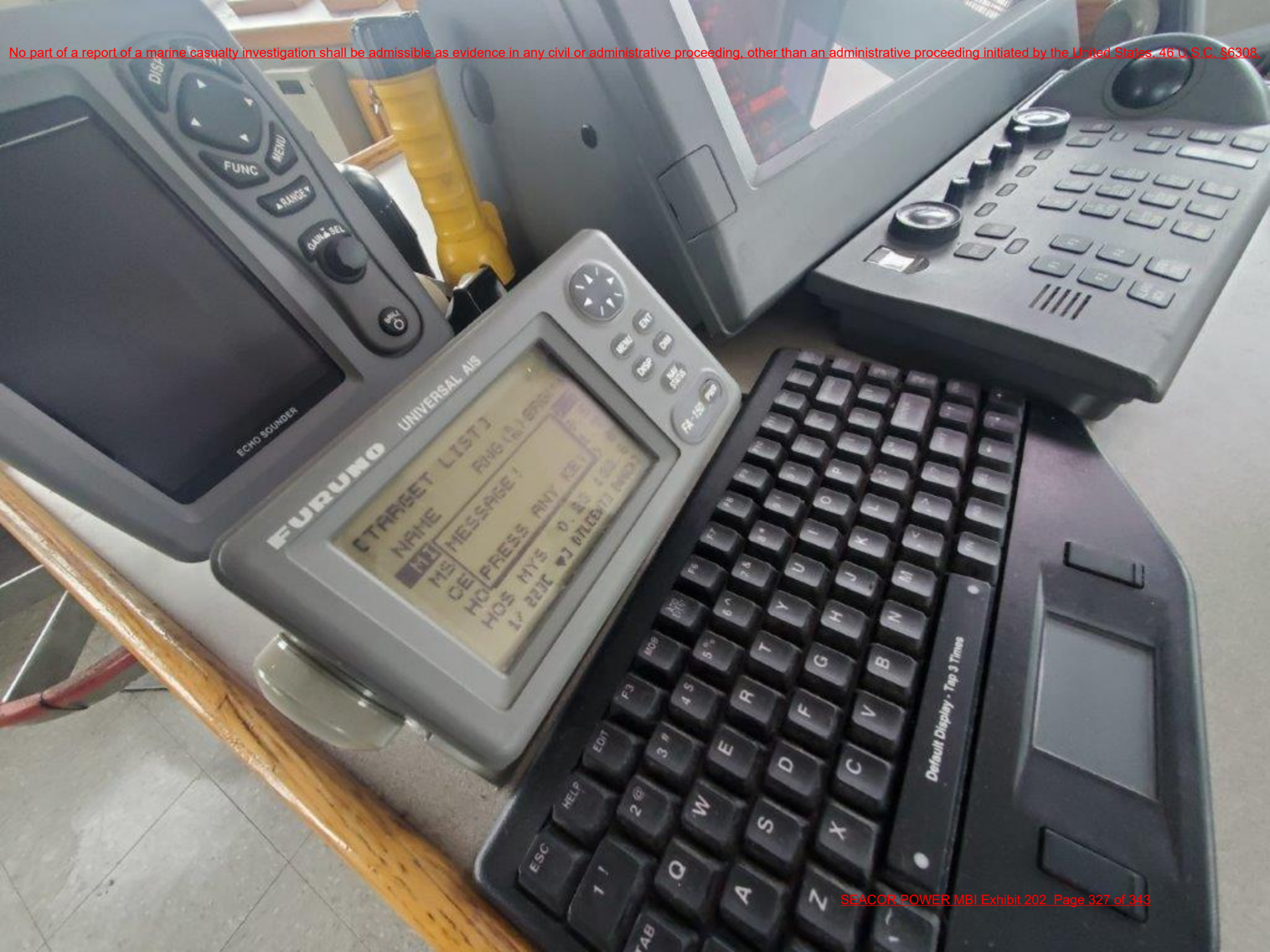
ALARM
 SILENCE
 SILENCE

PRESS ON WHEN POWER RESTORED

POWER ON
 SILENCE
 SILENCE



















Ship: *Stokes Power*
Date: _____
Location: *Four Mile Pt.*

Magnetic Bearing	Distance	True Bearing	Magnetic Bearing	Distance	True Bearing
110°	1.5	0°	110°	2.0	182°
120°	1.5	0°	120°	2.0	192°
130°	1.5	0°	130°	2.0	202°
140°	1.5	0°	140°	2.0	212°
150°	1.5	0°	150°	2.0	222°
160°	1.5	0°	160°	2.0	232°
170°	1.5	0°	170°	2.0	242°
180°	1.5	0°	180°	2.0	252°
190°	1.5	0°	190°	2.0	262°
200°	1.5	0°	200°	2.0	272°
210°	1.5	0°	210°	2.0	282°
220°	1.5	0°	220°	2.0	292°
230°	1.5	0°	230°	2.0	302°
240°	1.5	0°	240°	2.0	312°
250°	1.5	0°	250°	2.0	322°
260°	1.5	0°	260°	2.0	332°
270°	1.5	0°	270°	2.0	342°
280°	1.5	0°	280°	2.0	352°
290°	1.5	0°	290°	2.0	362°
300°	1.5	0°	300°	2.0	372°
310°	1.5	0°	310°	2.0	382°
320°	1.5	0°	320°	2.0	392°
330°	1.5	0°	330°	2.0	402°
340°	1.5	0°	340°	2.0	412°
350°	1.5	0°	350°	2.0	422°
360°	1.5	0°	360°	2.0	432°

Deviation Card















A marine electrical control panel with the following components:

- Top row: MAIN POWER, BATTERY, BATTERY, PILOT LIGHT, LIGHT, ALARM TEST, BATTERY.
- Second row: SECONDARY OFF, PRIMARY ALARM, SECONDARY OFF, PRIMARY ALARM.
- Third row: PORT, MIDDLE WHITE, LOWER RED NUC.
- Fourth row: STARBOARD, LOWER RED NUC.
- Fifth row: MASTHEAD, ANCHOR.
- Sixth row: STERN.

At the bottom, a warning label reads: "ALARM LAMP AND BUZZER INDICATES LIGHT FAILURE OR BLOWN FUSE. LIGHT CIRCUIT FUSES 3 AMPS MAX. TEST BUTTON GREENS ALL LIGHT CIRCUITS SWITCHES ON."

A chart of the International Code of Signals, showing letters A through Z and numbers 1 through 5, each with its corresponding flag or pennant. The chart is divided into sections for letters, numbers, and special signals.

DISCHARGE OF OIL PROHIBITED
THE FEDERAL WATER POLLUTION CONTROL ACT PROHIBITS THE DISCHARGE OF OIL OR OILY WASTE INTO OR FROM THE WATERS OF THE UNITED STATES OR FROM ANY POINTS OF DISCHARGE OF SUCH WASTE INTO ANY OF THE WATERS OF THE UNITED STATES. VIOLATIONS ARE SUBJECT TO CIVIL AND CRIMINAL PENALTIES, INCLUDING FINE AND IMPRISONMENT.



No part of a report of a marine casualty investigation shall be admissible as evidence in any civil or administrative proceeding, other than an administrative proceeding initiated by the United States. 46 U.S.C. §6308.

